

DELHI TRANSCO LTD.

STATE LOAD DISPATCH CENTER

PROGRESS REPORT

DECEMBER 2016

S. No.	CONTENTS	Page No.
1.	Salient Features of Delhi Power System	3
2.	Performance of Generating Stations within Delhi	4
3.	Details of Outage of Generating Stations within Delhi	5-18
4.	Allocation of Power to Delhi from unallocated quota of central sector	9
5.	Allocation of Power to Discoms	20
6.	Power Availability Demand Position of Delhi at the time of occurrence of Peak Demand	21
7.	Power Availability Demand Position of Delhi at the time of occurrence of Maximum Un-Restricted Demand	22
8.	Source wise scheduled drawl from grid and Availability within Delhi	23-26
9.	Shedding Details	27-31
10.	Load Curve for the Day of Peak Demand	32
11.	Load Curve for the day of occurrence of Maximum Un-Restricted Demand	33
12.	Load Curve for the day of Maximum Energy Consumed	34
13.	Load Curve for the day of Maximum Un-Restricted Energy Demand	35
14.	Load Duration Curve	36
15.	Frequency Analysis	37
16.	Voltage Profile for significant 220kV Sub-Stations	38
17.	Voltage Profile for significant 400kV Sub-Stations	39-40
18.	Details of Capacitors Installations in Delhi	41-46
19.	Tripping Details of 400/220 KV System in Delhi Power System	47-51
20.	Details of Under frequency Relay operations in Delhi Power System	52

Sr. No.	Features	DEC. 2015	DEC 2016
1	Effective Generation Capacity within Delhi in MW		
	Rajghat Power House	135	135
	Gas Turbine	270	270
	Pragati Power Corporation Ltd.	330	330
	Badapur Thermal Power Station	705	705
	Rithala GT	108	108
	Bawana	1372	1372
	TOWMCL	16	16
	Total	2936	2936
2	Maximum Unrestricted Demand (MW)	5463	3857
	Date	15.09.2015	30.12.2016
	Time	22.56.50	10.33.06
3	Peak Demand met (MW)	5457	3857
	Date	15.09.2015	30.12.2016
	Time	22.56.50	10.33.06
4	Peak Availability (MW)	5343	4328
5	Shortage (-) / Surplus (+) in MW	(-) 114	(-) 189
6	Percentage Shortage (-) / Surplus (+)	(-) 2.09	(-) 4.90
7	Maximum Energy Consume in a day (Mus)	113.334	63.033
8	Energy Consumed during the month	3042.194	1790.501
9	Load Shedding in Mus		
A)	Due to Grid Restrictions		
i)	Under Frequency Relay Operations	0.001	0.000
ii)	Manual Load shedding from DTL S/Stns.	0.000	0.000
iii)	Load Shedding due to low frequency / Low Voltage / TTC/ATC Violation		
	TPDDL	0.332	0.005
	BRPL	0.775	0.062
	BYPL	0.007	0.000
	NDMC	0.000	0.000
	MES	0.000	0.000
iv)	Due to transmission Constraints in Central Sector	0.129	0.000
	Total due to Grid Restriction	1.244	0.067
B)	Due to Constraints in System in Mus		
	DTL	1.738	0.380
	TPDDL	0.447	0.237
	BRPL	0.971	0.201
	BYPL	0.244	0.050
	NDMC	0.000	0.000
	MES	0.000	0.000
	Other Agencies	0.098	0.014
	Total	3.498	0.882
11	Grand Total in Mus	4.742	0.949

2. PERFORMANCE OF GENERATING STATIONS WITHIN DELHI DURING DECEMBER 2016

A) For the month of December 2016

All Figures in MUs

S. No	Stations	Gross Generation	Aux. Consumption	Net Generation	Availability (%)	Backing Down
1.	RPH	0.000	0.259	-0.259	0.00	0.000
2.	GT	60.417	1.559	58.858	78.59	94.457
3.	PPCL	166.298	3.781	162.517	99.62	75.517
4.	BTPS	0.000	0.000	0.000	0.00	0.000
5.	Rithala	0.000	0.062	-0.062	89.17	61.008
6.	Bawana	194.786	5.959	188.827	100.34	810.609
7.	Towmcl	10.932	1.800	9.132	--	--
8.	EDWPCL	0.311	0.620	-0.309	--	--
9.	DMSWL	0.009	0.000	0.009	--	--
	TOTAL	432.753	14.04	418.713	--	--

B) For the Year 2016-17 (Upto December 2016)

Power Station	Effective Capacity (MW)	Net Generation in MUs for Dec 2016	Availability (%) for Dec 2016	PLF (%) for Dec 2016	Cumulative Generation in MUs upto Dec 2016 for the year 2016-17	Cumulative Availability in % upto Dec 2016 for the year 2016-17	Cumulative PLF in % upto Dec 2016 for the year 2016-17
RPH	135	-0.259	0.00	-0.58	-5.604	-0.78	0.00
GT	270	58.858	78.59	30.11	515.865	81.21	29.83
PPCL	330	162.517	99.62	67.91	1453.837	89.34	68.53
BTPS	705	0.000	0.00	0.00	1357.425	45.80	37.47
Rithala	108	-0.062	89.17	0.00	-0.550	89.17	0.00
Bawana	1372	188.827	100.34	19.47	1401.140	73.12	16.05
Towmcl	16	9.132	--	--	97.694	--	--
EDWPCL		-0.309	--	--	-0.210	--	--
DMSWL		0.009	--	--	0.067	--	--
TOTAL	2936	418.713	--	--	4819.664	--	--

3 DETAILS OF OUTAGES OF GENERATING STNS. WITHIN DELHI W.E.F. APRIL 2016

RPH

Unit No	Capacity in MW	Outage		Synchronization		Reason of Outage
		Date	Time	Date	Time	
1	67.5	08.05.15	13.40	--	--	Tripped on boiler tube leakage

Unit No	Capacity in MW	Outage		Synchronization		Reason of Outage
		Date	Time	Date	Time	
2	67.5	21.05.15	10.20	--	--	Stopped due to shortage of coal

(B) Gas Turbine

Unit No	Capacity in MW	Outage		Synchronization		Reason of Outage
		Date	Time	Date	Time	
1	30	30.03.16	13:52	17.04.16	10:45	Machine tripped as heavy jerk observed in Control room and 160 MVA Tr-I & II tripped at 220 KV end due to tripping of Geeta Colony to Wazirabad ckt. Machine not taken on load due to less demand from SLDC.
		17.04.16	10:45	17.04.16	18:45	Station shut down to attend ACW line.
		17.04.16	18:45	29.04.16	19:15	Stopped due to low demand and high frequency
		13.5.16	16:10	13.5.16	17:47	Machine stopped to replace the broken drain valve in the inlet line of ACW.
		15.5.16	08:40	15.5.16	11:00	machine stopped to attend the leakage of oil from LV bushing of Unit Transformer. Machine cleared by Electrical division at 11:00 hrs but machine not taken on load due to low schedule from SLDC.
		15.5.16	11:00	16.5.16	10:54	Machine stopped as per SLDC message
		23.5.16	15:46	25.5.16	15:30	Machine tripped due to tripping of 160 MVA Tr-I & II. After that machine not taken on load due to less demand
		28.5.16	12:01	6.6.16	09:58	Stopped due to low demand and high frequency
		10.6.16	16:54	10.6.16	17:08	machine came on FSNL as both the ICT 160 MVA TX-I & II tripped due to jek in the system.
		13.6.16	07:11	13.6.16	09:00	Machine tripped as heavy jerk observed in the system as both 160 MVA Tx-I & II tripped.
		4.7.16	17:53	6.7.16	08:50	Stopped due to low demand and high frequency
		15.7.16	00:32	15.7.16	18:18	
		15.7.16	21:42	20.7.16	10:58	
		20.7.16	15:25	21.7.16	14:45	
		1.8.16	14:55	1.8.16	15:40	Machine stopped due to heavy smoke from Turbine auxiliary compartment.
		1.8.16	18:43	2.8.16	10:00	Tripped due to failure of communication link with I/O packs.
		2.8.16	10:00	3.8.16	10:15	Stopped due to low demand and high frequency
		4.8.16	12:30	4.8.16	14:08	Machine stopped to replace 11 KV CKT breaker due to low SF6 gas pressure.
		5.8.16	19:05	29.8.16	19:35	Stopped due to low demand and high frequency
		29.8.16	20:50	02.09.16	12:56	
		04.10.16	00:25	04.10.16	16:05	Machine tripped as all communication failed . PCAA card failed.
		18.10.16	03:21	18.10.16	06:21	Machine came on FSNL and the following alarm appeared. Generator Control panel under voltage. Generator breaker tripped.
		18.10.16	13:45	03.11.16	14:52	Stopped due to low demand and high frequency
		26.11.16	15:47	26.11.16	16:36	Machine came on part load due to tripping of both 160 MVA Tr- 1 & 2 after five minutes machine tripped.
		29.11.16	10:50	29.11.16	10:57	Machine came on FSNL as both 160 MVA Tr. Tripped
		29.11.16	13:09	29.11.16	13:17	Machine came on FSNL as both 160 MVA Tr. Tripped
		30.11.16	04:30	30.11.16	04:56	Machine came on FSNL as both 160 MVA Tr. Tripped
30.11.16	04:59	30.11.16	05:39	Machine tripped due to grid disturbance.		
30.11.16	06:00	30.11.16	06:25	Machine tripped due to grid disturbance.		

Unit No	Capacity in MW	Outage		Synchronization		Reason of Outage
		Date	Time	Date	Time	
2	30	28.01.16	01:20	31.03.16	23:59	Stopped due to low demand and high frequency
		01.04.16	18:00	17.04.16	10:45	
		17.04.16	10:45	17.04.16	18:45	Station shut down to attend ACW line.
		17.04.16	18:45	5.5.16	15:11	Stopped due to low demand and high frequency
		5.5.16	15:57	5.5.16	16:40	Machine stopped due to problem in ACW line.
		7.5.16	17:02	7.5.16	17:52	Problem in battery charger
		19.5.16	00:02	19.5.16	01:03	T-Communication link inoperative
		23.5.16	15:46	23.5.16	15:50	Machine came on FSNL due to tripping of 160 MVA Tr-I& II.
		25.5.16	06:09	25.5.16	06:52	T-Communication link inoperative
		26.5.16	18:15	26.5.16	23:20	Machine tripped on high exhaust trip alarm.
		29.5.16	00:50	06.06.16	08.56	Stopped due to low demand and high frequency
		10.6.16	16:54	10.6.16	17:00	machine came on FSNL as both the ICT 160 MVA TX-I & II tripped due to jerk in the system.
		13.6.16	07:11	13.6.16	13:40	Machine tripped as heavy jerk observed in the system as both 160 MVA Tx-I & II tripped.
		1.7.16	02:20	1.7.16	09:18	Loss of Field alarm appeared and machine tripped on Electrical Trouble Normal Shutdown.
		2.7.16	11:40	6.7.16	15:45	Stopped due to low demand and high frequency
		6.7.16	22:50	6.7.16	23:10	Loss of Field alarm appeared and machine tripped on Electrical Trouble Normal Shutdown.
		6.7.16	23:10	7.7.16	16:26	Stopped due to low demand and high frequency
		7.7.16	18:40	7.7.16	20:09	Loss of Field alarm appeared and machine tripped on Electrical Trouble Normal Shutdown.
		9.7.16	15:35	9.7.16	16:40	machine desynchroniz to check the Mvar problem.
		9.7.16	18:40	9.7.16	22:45	Loss of Field alarm appeared and machine tripped on Electrical Trouble Normal Shutdown.
		9.7.16	22:53	12.7.16	15:55	Stopped due to low demand and high frequency
		15.7.16	21:42	20.7.16	13:20	
		21.7.16	15:40	22.7.16	13:02	
		5.8.16	10:23	5.8.16	17:00	Machine tripped on Electrical trouble normal shut down.
		5.8.16	17:00	12.8.16	12:58	Stopped due to low demand and high frequency
		12.8.16	13:28	29.8.16	14:45	
		18.10.16	17:45	03.11.16	11.30	
		4.11.16	03:01	4.11.16	05:05	Generator breaker trip alarm appeared on CRT of GT-2. M/c came on FSNL & also showing 8 MW load on CRT. After discussion with C&I, m/c manually tripped by tripping 66 KV breaker.
		26.11.16	15:47	26.11.16	16:28	Machine tripped as both 160 MVA Tr-1 & 2 tripped.
		29.11.16	10:50	29.11.16	10:58	Machine came on FSNL as both 160 MVA Tr. Tripped
29.11.16	13:09	29.11.16	13:13	Machine came on FSNL as both 160 MVA Tr. Tripped		
30.11.16	04:38	30.11.16	05:12	Machine stopped as per instruction of SLDC.		
30.11.16	06:00	30.11.16	06:56	Machine tripped due to grid disturbance.		
30.11.16	11:44	30.11.16	23:59	Machine stopped due to high TAD and damage to filter house.		

Unit No	Capacity in MW	Outage		Synchronization		Reason of Outage
		Date	Time	Date	Time	
3	30	01.02.16	19:15	17.04.16	10:45	Stopped due to low demand and high frequency
		17.04.16	10:45	17.04.16	18:45	Station shut down to attend ACW line.
		17.04.16	18:45	12.05.16	12:00	Stopped due to low demand and high frequency
		12.5.16	12:00	19.5.16	23:09	Machine under shut down as permit taken by Electrical division to replace its 66 KV breaker.
		19.5.16	23:09	20.5.16	20:52	Machine available but not taken on load due to less schedule from SLDC
		20.5.16	23:58	06.06.16	15:40	Stopped due to low demand and high frequency
		6.6.16	18:06	9.6.16	15:50	
		9.6.16	18:46	30.6.16	14:30	
		30.6.16	14:40	30.6.16	16:20	Machine tripped due'S' communication link inoperative.
		30.6.16	17:19	30.6.16	18:05	machine tripped on false alarm in Turbine or Accessories Area.
		01.07.16	01:00	30.11.16	23.59	Stopped due to low demand and high frequency

Unit No	Capacity in MW	Outage		Synchronization		Reason of Outage
		Date	Time	Date	Time	
4	30	29.01.16	14:00	17.04.16	10:45	Stopped due to low demand and high frequency
		17.04.16	10:45	17.04.16	18:45	Station shut down to attend ACW line.
		17.04.16	18:45	16.05.16	15:04	Stopped due to low demand and high frequency
		16.5.16	18:04	18.5.16	16:12	Machine stopped due to low schedule from SLDC
		21.5.16	16:05	21.5.16	17:57	supply of Computer failed.
		23.5.16	15:46	24.5.16	15:25	Machine tripped due to tripping of 160 MVA Tr-I& II. After that machine nottaken on load due to less demand
		24.5.16	16:27	6.6.16	11:12	Stopped due to low demand and high frequency
		6.6.16	20:10	7.6.16	10:34	
		10.6.16	16:54	10.6.16	17:08	machine came on FSNL as both the ICT 160 MVA TX-I & II tripped due to jek in the system.
		10.6.16	18:32	13.6.16	12:55	Stopped due to low demand and high frequency
		13.6.16	22:38	20.6.16	08:33	
		20.6.16	16:30	24.6.16	12:14	
		24.6.16	17:45	30.6.16	10:07	Machine tripped on over temperature alarm
		30.6.16	19:00	30.6.16	19:55	
		2.7.16	08:48	8.7.16	10:51	Stopped due to low demand and high frequency
		8.7.16	12:20	14.7.16	11:45	
		14.7.16	15:10	30.11.16	23.59	

Unit No	Capacity in MW	Outage		Synchronization		Reason of Outage	
		Date	Time	Date	Time		
5	30	14.03.16	19:15	01.04.16	15:05	Stopped due to low demand and high frequency	
		11.04.16	19:06	11.04.16	21:22		
		17.04.16	10:45	17.04.16	18:38	Station shut down to attend ACW line.	
		18.04.16	12:54	24.04.16	10:55	Stopped due to low demand and high frequency	
		29.04.16	19:15	13.05.16	17:10		
		13.5.16	19:30	16.5.16	13:29		
		20.5.16	23:42	21.5.16	18:08	machine stopped to attend leakage of oil from IGV	
		21.5.16	18:55	21.5.16	20:04	Machine tripped on high exhaust temperature	
		22.5.16	11:46	23.5.16	11:30	Stopped due to low demand and high frequency	
		23.5.16	11:55	23.5.16	12:30	machine desynchronise to check the position of Bleed valve.	
		23.5.16	15:46	24.5.16	15:42	Machine tripped due to tripping of 160 MVA Tr-I& II. After that machine nottaken on load due to less demand	
		25.5.16	16:35	26.5.16	19:05	Stopped due to low demand and high frequency	
		27.5.16	00:07	27.5.16	17:20		
		27.5.16	17:25	28.5.16	11:07		
		29.5.16	22:10	29.5.16	22:22	Machine came on FSNL due to tripping of 160 MVA Tr-I& II.	
		10.6.16	16:54	10.6.16	17:08	machine came on FSNL as both the ICT 160 MVA TX-I & II tripped due to jek in the system.	
		11.6.16	20:45	13.6.16	11:12	Stopped due to low demand and high frequency	
		20.6.16	01:04	23.6.16	15:59	Machine stopped to inspect the low load reason on mahine by M/s BGGTS	
		23.6.16	16:00	24.6.16	16:18	Stopped due to low demand and high frequency	
		24.6.16	18:05	25.6.16	10:10		
		2.7.16	11:35	4.7.16	16:52		
		7.7.16	17:20	8.7.16	08:38		
		12.7.16	16:55	14.7.16	09:06		
		15.7.16	18:57	15.7.16	21:40		
		23.7.16	08:15	27.7.16	05:03		
		28.7.16	15:17	5.8.16	17:10		
		15.8.16	16:31	15.8.16	17:37		Heavy jerk observed in Control room. GT-5 tripped .Relay-P343 operated at protection panel.Both 160 MVA tr. Tripped.
		18.8.16	17:05	19.8.16	11:06		Stopped due to low demand and high frequency
		19.8.16	11:17	19.8.16	11:40	Machine desynchronize to check the hunting in load.	
		31.8.16	10:30	04.10.16	08.34	Stopped due to low demand and high frequency	
04.10.16	19:00	18.10.16	16.32				
3.11.16	16:03	10.11.16	12:45				
11.11.16	00:04	30.11.16	13:18				

Unit No	Capacity in MW	Outage		Synchronization		Reason of Outage
		Date	Time	Date	Time	
6	30	19.03.16	11:40	6.04.16	12:00	Stopped due to low demand and high frequency
		06.04.16	12:00	11.04.16	18:10	machine taken under S/d for Combustion Inspection & Boroscopic Inspection
		11.04.16	21:06	17.04.16	10:45	Stopped due to low demand and high frequency
		17.04.16	10:45	17.04.16	18:45	Station shut down to attend ACW line.
		17.04.16	18:45	18.04.16	11:30	Stopped due to low demand and high frequency
		24.04.16	11:44	13.05.16	18:45	
		13.5.16	20:15	16.5.16	17:23	
		23.5.16	15:46	23.5.16	16:37	Machine tripped due to tripping of 160 MVA Tr-I& II.
		29.5.16	01:50	02.06.16	10:48	Machine stopped due to low schedule from SLDC
		10.6.16	16:54	10.6.16	17:08	machine came on FSNL as both the ICT 160 MVA TX-I & II tripped due to jek in the system.
		11.6.16	20:45	13.6.16	20:34	Stopped due to low demand and high frequency
		20.6.16	16:35	24.6.16	13:20	
		24.6.16	18:08	25.6.16	10:04	
		6.7.16	16:55	8.7.16	11:05	
		12.7.16	15:00	14.7.16	15:05	
		27.7.16	03:58	27.7.16	09:11	Machine tripped on Electrical trouble normal shut down. SF-6 second stage gas pressure low alarm appeared on protection pannel
		27.7.16	09:11	05.08.16	12:10	Stopped due to low demand and high frequency
		29.8.16	17:25	05.10.16	16:25	Machine stopped as there was no schedule from SLDC on Spot R-LNG.
		05.10.16	16:25	05.10.16	17:20	Trial run of GT-6 to check the sound & vibn. While shutting down
		05.10.16	17:20	18.10.16	11:25	Stopped due to low demand and high frequency
		3.11.16	13:57	10.11.16	12:12	
		10.11.16	17:01	10.11.16	19:00	Machine tripped on over temperature trip.
		10.11.16	19:00	30.11.16	23:59	Machine made available by Maintenance division but not taken on load due low schedule from beneficiary.

Unit No	Capacity in MW	Outage		Synchronization		Reason of Outage
		Date	Time	Date	Time	
STG -1	30	29.1.16	14:00	01.04.16	18:05	M/c cleared from maintenance side but Stopped due to low demand and high frequency
		17.04.16	10:45	17.04.16	18:45	Station shut down to attend ACW line.
		17.04.16	18:45	29.04.16	19:15	Stopped due to low demand and high frequency
		01.5.16	21:27	01.5.16	22:59	Machine tripped due to failure of LT supply.
		13.5.16	16:10	13.5.16	18:48	Machine stopped due to problem in ACW line.
		23.5.16	15:46	23.5.16	17:25	Machine tripped due to tripping of 160 MVA Tr-I & II.
		23.5.16	19:20	24.5.16	14:04	Stopped due to low demand and high frequency
		29.5.16	00:50	06.06.16	11.44	
		10.6.16	16:54	10.6.16	17:53	machine tripped as both the ICT 160 MVA TX-I & II tripped due to jerk in the system.
		13.6.16	07:11	13.06.16	10:45	Machine tripped as heavy jerk observed in the system as both 160 MVA Tx-I & II tripped.
		04.07.16	17:53	06.07.16	12:20	Stopped due to low demand and high frequency
		15.07.16	21:42	21.07.16	13:29	
		31.07.16	15:31	31.07.16	16:05	Due to jerk CEP-1A tripped & machine tripped on low vacuum.
		05.08.16	19:05	29.08.16	17:20	Machine stopped as per sSLDC to maintain only 72 MW generation.
		14.09.16	11:35	14.09.16	12:53	Machine tripped due to turbine F JB shaft vibration very high.
		15.09.16	14:28	15.09.16	16:02	Machine tripped on generator RJB housing vibration very high.
		06.10.16	17:02	06.10.16	18.46	Machine stopped to attend hot spot on Y-phase bushing of STG#1 unit Transformer.
		07.10.16	11:52	07.10.16	12.34	Due to Jerk , equipments like BFP, CEP & ACW tripped. Equipments restarted again jerk observed and the equipments BFP, CEP and ACW tripped and machine tripped on low vacuum.
		18.10.16	17:45	03.11.16	13.38	Stopped due to low demand and high frequency
		25.11.16	13:26	25.11.16	15:28	Due to Sudden jerk 7.5 MVA tr. Tripped on earth fault relay leading to failure of auxiliary supply to critical auxiliaries like BFP, CEP and machine tripped. .
26.11.16	15:47	26.11.16	18:20	Machine tripped as both 160 MVA Tr-1 & 2 tripped.		
29.11.16	10:50	29.11.16	12:02	Machine tripped as both 160 MVA Tr-1 & 2 tripped.		
29.11.16	13:09	29.11.16	13:55	Machine tripped as both 160 MVA Tr-1 & 2 tripped.		
30.11.16	04:30	30.11.16	09:50	Machine tripped as both 160 MVA Tr-1 & 2 tripped.		

Unit No	Capacity in MW	Outage		Synchronization		Reason of Outage
		Date	Time	Date	Time	
STG-2	30	29.01.16	14:00	17.04.16	10:45	M/c cleared from maintainence side Stopped due to low demand and high frequency
		17.04.16	10:45	17.04.16	18:45	Station shut down to attend ACW line.
		17.04.16	18:45	19.05.16	07.45	Stopped due to low demand and high frequency
		21.5.16	16:04	21.5.16	19:15	Machine tripped due to tripping of GT#4
		23.5.16	15:46	23.5.16	17:25	Machine tripped due to tripping of 160 MVA Tr-I& II.
		23.5.16	17:25	06.06.16	17.04	Stopped due to low demand and high frequency
		6.6.16	17:19	6.6.16	19:38	machine tripped on Hot well very high alarm as the parameter of STG# 2 got freezed and actual value of the same was not appearing on BCD.
		6.6.16	20:10	7.6.16	12:55	Stopped due to low demand and high frequency
		10.6.16	16:54	13.6.16	18:06	machine tripped as both the ICT 160 MVA TX-I & II tripped due to jek in the system. Machine not taken on load due low demand.
		13.6.16	22:38	20.6.16	11:40	Stopped due to low demand and high frequency
		20.6.16	16:35	24.6.16	14:54	
		24.6.16	17:47	30.6.16	13:45	
		30.6.16	19:00	30.6.16	22:03	Machine tripped due to tripping of GT#4
		02.07.16	08.48	19.10.16	14.00	Stopped due to low demand and high frequency
		19.10.16	14.00	20.10.16	23.59	Fire broke down in some control and power cables near CEP- 2A after that machine taken for major overhauling which was already planned from 20/10/2016 to 14/11/2016.
		21.10.16	00.00	30.11.16	23.59	Planned outage from 21.10.2016 to 20.11.2016

Unit No	Capacity in MW	Outage		Synchronization		Reason of Outage
		Date	Time	Date	Time	
STG-3	30	19.03.16	18:15	01.04.16	17:45	Stopped due to low demand and high frequency
		01.04.16	18:30	01.04.16	19:26	Tripped on Gen. Class-A relay
		01.04.16	19:32	01.04.16	20:07	Tripped on Gen. Class-A relay
		11.04.16	21:06	11.04.16	21:45	Machine stopped due to stopping of GT#6.
		17.04.16	10:45	17.04.16	19:57	Station shut down to attend ACW line.
		29.04.16	19:15	09.05.16	15:52	Stopped due to low demand and high frequency
		16.5.16	16:02	16.5.16	16:30	Machine stopped to attend false over speed alarm
		21.5.16	21:28	21.5.16	23:52	Machine tripped on Turbine FJB shaft vibration very high
		23.5.16	15:46	23.5.16	17:30	Machine tripped due to tripping of 160 MVA Tr-I& II.
		29.5.16	22:10	29.5.16	23:45	Machine tripped due to tripping of 160 MVA Tr-I& II.
		31.5.16	20:16	31.5.16	23:45	SNH feeder tripped & found earth fault.
		2.6.16	11:36	2.6.16	14:00	Machine tripped while changing the load from auxiliary to pressure.
		10.6.16	16:54	10.6.16	17:38	machine tripped due to jek in the system.
		11.6.16	20:45	13.6.16	13:26	Stopped due to low demand and high frequency
		13.6.16	21:30	13.6.16	22:30	Machine tripped on Class A relay.
		19.6.16	07:01	19.6.16	08:02	Machine tripped on FJB shaft vibration very high.
		20.6.16	16:35	24.6.16	15:16	Stopped due to low demand and high frequency
		24.6.16	18:12	25.6.16	11:55	
		7.7.16	17:20	8.7.16	11:18	
		12.7.16	16:55	14.7.16	12:30	
		18.7.16	04:38	18.7.16	06:45	Machine tripped on FJB shaft Vibration very high.
		27.7.16	03:58	27.7.16	09:11	Machine tripped due to tripping of GT-6 as running on single HRSG#6.
		28.7.16	15:17	05.08.16	16:30	Stopped due to low demand and high frequency
		5.08.16	18:01	05.08.16	18:52	Machine tripped on turbine oil pressure very low.
		9.08.16	10:55	09.08.16	11:31	Machine tripped on low vacuum due to tripping of CWP-1
		15.08.16	16:31	15.08.16	17:28	Heavy jerk observed. STG-3 tripped due to failure of auxiliary supply.
		28.08.16	14:28	28.08.16	16:16	Machine tripped on generator housing vibration high.after replacing the Vibratio card machine synchronized.
		28.08.16	16:27	28.08.16	17:03	Machine tripped on generator and turbine housing vibration high.
		31.08.16	10:30	04.10.16	13.14	Machine stopped as per sSLDC to maintain only 36 MW generation.
		04.10.16	19:00	18.10.16	13.25	Stopped due to low demand and high frequency
		3.11.16	16:03	10.11.16	14:15	
		11.11.16	00:04	30.11.16	16:56	

(C) PRAGATI

Unit No	Capacity in MW	Outage		Synchronization		Reason of Outage
		Date	Time	Date	Time	
1	104	01.04.16	00.00	06.04.16	06.00	Stopped due to low demand and high frequency
		01.05.16	05.58	01.05.16	13.15	Unit stopped by stn.
		07.05.16	11.37	07.05.16	12.34	Unit tripped.
		23.05.16	22.16	24.05.16	10.01	Unit stopped and started due to low demand and high frequency
		09.06.16	14:33	09.06.16	15:10	GT#1 tripped on grid disturbance.
		18.06.16	07:09	18.06.16	09:13	GT#1 tripped on grid disturbance.
		18.06.16	10:09	18.06.16	10:38	GT#1 tripped.
		11.07.16	08.10	11.07.16	09.32	Unit tripped due to grid disturbance
		16.07.16	08.50	19.07.16	11.00	Stopped due to low demand and high frequency
		19.07.16	11.00	19.07.16	14.01	Unit not available
		30.07.16	00.00	31.07.16	14.10	Stopped due to low demand and high frequency
		06.08.16	14.00	08.08.16	10.37	
		12.08.16	17.00	16.08.16	10.50	
		18.08.16	11.30	22.08.16	10.35	
		31.08.16	09.46	03.09.16	09.58	
		19.09.16	00.00	04.10.16	21.42	Unit stopped for CI.
		05.10.16	01.11	05.10.16	02.46	Stopped after trial run (VT supply failure)
		05.10.16	07.27	16.10.16	18.36	Generator cooler / winder problem attended during CI
		16.10.16	22.35	31.10.16	23.59	Stopped due to low demand and high frequency
		01.11.16	00.00	07.11.16	13.05	Stopped due to low demand and high frequency
		26.11.16	09.48	26.11.16	13.30	Stopped due to abnormal sound
		26.11.16	15.43	26.11.16	16.36	Unit tripped on grid disturbance
		28.11.16	19.29	28.11.16	22.30	Stopped due to fire at filter house
		28.11.16	22.30	29.11.16	01.00	Stopped due to low demand and high frequency
		29.11.16	01.00	29.11.16	20.12	R Phse dead dnd insulator damaged
		30.11.16	04.45	30.11.16	09.41	Unit tripped on grid disturbance

Unit No	Capacity in MW	Outage		Synchronization		Reason of Outage
		Date	Time	Date	Time	
2	104	01.04.16	00.00	01.04.16	03.18	Stopped due to low demand and high frequency
		06.04.16	08.40	11.04.16	04.31	G.T.-2 was swppped by G.T. -1 and started as desired
		15.04.16	06.06	15.04.16	12.02	Unit stopped
		24.04.16	14.15	25.04.16	06.48	Stopped due to low demand and high frequency
		28.04.16	12.44	28.04.16	13.35	Unit tripped
		06.05.16	11.28	06.05.16	16.00	Unit tripped due to grid disturbance
		06.05.16	16.00	11.05.16	13.27	Unit tripped
		26.05.16	21.18	26.05.16	22.55	Unit tripped
		05.06.16	03:59	08.06.16	15:17	GT2 tripped
		10.06.16	16:50	10.06.16	17:38	GT#2 tripped on grid disturbance.
		13.06.16	19:49	13.06.16	20:54	GT#2 tripped on grid disturbance.
		18.06.16	07:09	18.06.16	09:54	GT#2 tripped on grid disturbance.
		19.06.26	05:58	20.06.16	06:00	Stopped due to low demand and high frequency
		13.07.16	16.29	15.07.16	19.18	Unit tripped
		31.07.16	07.22	03.08.16	14.24	Stopped due to low demand and high frequency
		28.08.16	12.39	28.08.16	16.00	G.T.-2 and STG was tripped due to grid disturbance
		28.08.16	16.00	28.08.16	22.45	Unit unavailable.
		03.09.16	11.05	03.09.16	12.00	Unit was swapped by G.T. -1
		03.09.16	12.00	04.09.16	18.00	Unit was remain unavailable
		04.09.16	18.00	07.09.16	22.58	Stopped due to low demand and high frequency
		01.10.16	15.13	01.10.16	16.00	G.T. -2 & STG tripped on grid disturbance
		08.10.16	13.28	08.10.16	14.15	
		30.11.16	03.13	30.11.16	07.40	GT#2 tripped on grid disturbance
30.11.16	14.00	30.11.16	23.30	Stopped for inlet air filter		
30.11.16	23.30	30.11.16	23.59	Stopped due to low demand and high frequency		

Unit No	Capacity in MW	Outage		Synchronization		Reason of Outage
		Date	Time	Date	Time	
STG	122	01.04.16	00.00	01.04.16	09.07	Stopped due to low demand and high frequency
		21.04.16	14.59	21.04.16	16.25	STG Tripped
		24.04.16	13.15	24.04.16	21.27	Unit stopped
		29.04.16	11.58	29.04.16	12.46	STG Tripped
		02.05.16	15.57	02.05.16	16.54	STG Tripped
		06.05.16	11.28	06.05.16	12.12	Unit tripped due to grid disturbanve
		07.05.16	11.40	07.05.16	13.30	Unit tripped alongwith G.T.-1
		08.05.16	17.49	08.05.16	19.35	STG Tripped
		10.05.16	17.55	10.05.16	23.58	STG Tripped
		13.05.16	19.02	13.05.16	20.50	Stopped due to low demand and high frequency
		05.06.16	14:20	05.06.16	15:06	STG tripped on grid disturbance.
		09.06.16	14:33	09.06.16	16:22	STG tripped on grid disturbance.
		10.06.16	16:50	10.06.16	18:00	STG tripped on grid disturbance.
		13.06.16	12:14	13.06.16	17:46	Stopped due to low demand and high frequency
		13.06.16	19:49	13.06.16	21:34	STG tripped on grid disturbance.
		18.06.16	07:09	18.06.16	10:05	STG tripped on grid disturbance.
		18.06.16	10:09	18.06.16	10:57	STG tripped on GT#1 tripped
		27.06.16	19:06	28.06.16	03:36	Stopped due to low demand and high frequency
		09.07.16	12.53	09.07.16	15.19	Unit tripped
		11.07.16	08.05	11.07.16	10.52	Unit tripped due to grid disturbance
		18.07.16	18.37	18.07.16	19.44	Unit tripped
		30.07.16	09.17	30.07.16	18.23	Stopped due to low demand and high frequency
		31.07.16	07.22	31.07.16	16.17	
		28.08.16	12.39	28.08.16	14.24	Unit tripped due to grid disturbance
		01.10.16	15.13	01.10.16	16.52	G.T. -2 & STG tripped on grid disturbance
		03.10.16	16.16	03.10.16	17.09	Unit tripped on grid disturbance
		08.10.16	13.28	08.10.16	14.59	
		30.11.16	03.13	30.11.16	08.40	

(D) BADARPUR THERMAL POWER STATION

Unit	Capacity in MW	Outage		Synchronization		Reason of Outage
		Date	Time	Date	Time	
1	95	01.04.15	00.00	31.12.16	23.59	Stopped due to low demand and high frequency

Unit	Capacity in MW	Outage		Synchronization		Reason of Outage
		Date	Time	Date	Time	
2	95	24.09.15	19.52	31.12.16	23.59	Stopped due to low demand and high frequency

Unit	Capacity in MW	Outage		Synchronization		Reason of Outage
		Date	Time	Date	Time	
3	95	09.10.15	01.00	31.12.16	23.59	Stopped due to low demand and high frequency

Unit	Capacity in MW	Outage		Synchronization		Reason of Outage
		Date	Time	Date	Time	
4	210	12.12.15	14.30	04.04.16	07.47	Stopped due to low demand and high frequency
		11.04.16	14.03	12.04.16	20.11	Economizer tube leakage
		24.04.16	1621	24.04.16	21.52	PA Fan A lub oil sys temp high
		01.05.16	16.30	01.05.16	17.55	Human Error(Vacuum low)
		10.05.16	05.34	11.05.16	01.39	Boiler Drum Impulse line lkg
		11.05.16	09.08	21.05.16	03.10	Gen Seal problem
		21.05.16	04.04	21.05.16	04.38	ID Fan A Thermal Overload
		21.05.16	15.10	21.05.16	16.45	Relay malfunction (air flow low)
		03.06.16	21.30	05.06.16	07.03	Water Platen Lkg
		09.06.16	14.27	09.06.16	18.22	Grid Disturbance
		01.10.16	15.39	01.10.16	19.57	Unit tripped on grid disturbance
		06.11.16	17.14	31.12.16	23.59	Planned shutdown

Unit	Capacity in MW	Outage		Synchronization		Reason of Outage
		Date	Time	Date	Time	
5	210	24.04.16	16.21	24.04.16	21.52	Stopped due to temp. high.
		06.06.16	09.50	07.06.16	13.53	Water leakage
		09.06.16	14.28	09.06.16	17.11	Tripped due to grid disturbance
		17.07.16	14.30	17.07.16	18.15	Oil surge relay cable inter core shorting.
		09.08.16	22.20	10.08.16	02.29	AVR and excitation system problem.
		01.10.16	15.39	01.10.16	18.57	Tripped due to grid disturbance
		01.10.16	19.02	01.10.16	19.20	Generator protection system
		05.10.16	03.45	07.10.16	08.54	Reheater tube leakage
		17.10.16	21.11	03.12.16	24.00	
		04.12.16	00.00	20.12.16	24.00	
		21.12.16	00.00	31.12.16	24.00	Planned shutdown

(E) BAWANA CCGT POWER STATION

Unit	Capacity in MW	Outage		Synchronization		Reason of Outage
		Date	Time	Date	Time	
1	216	16.07.15	02.18	06.12.16	12.00	Machine tripped due to compressor stalling alarm
		06.12.16	12.00	07.12.16	22.06	Stopped due to low demand and high frequency
		09.12.16	01.26	09.12.16	04.57	Machine tripped on internal fault.
		09.12.16	10.28	09.12.16	11.38	

Unit	Capacity in MW	Outage		Synchronization		Reason of Outage
		Date	Time	Date	Time	
2	216	24.03.16	00.00	03.05.16	06.00	Stopped due to low demand and high frequency
		03.05.16	06.00	03.05.16	09.30	Machine shutdown for planned mtc.
		03.05.16	09.30	13.06.16	15.00	Stopped due to low demand and high frequency
		13.06.16	15.00	16.06.16	17.15	Machine shut down for planned maintenance due to annual testing of generator transformer .
		16.06.16	17.15	26.06.16	09.24	Stopped due to low demand and high frequency
		02.08.16	15.23	02.08.16	15.47	Machine tripped due to failure of primary DPU Card
		06.08.16	11.07	06.08.16	12.50	Machine tripped due to rebooting of Mark VI.
		01.09.16	08.45	05.09.16	12.00	Machine shutdown for attending internal fault
		05.09.16	12.00	30.11.16	23.59	
		08.12.16	06.35	31.12.16	23.59	Stopped due to low demand and high frequency

Unit	Capacity in MW	Outage		Synchronization		Reason of Outage
		Date	Time	Date	Time	
STG-1	254	28.03.16	00.00	15.04.16	10.00	Planned Shut down.
		15.04.16	10.00	03.05.16	06.00	Stopped due to low demand and high frequency
		03.05.16	06.00	03.05.16	09.30	Machine shutdown for planned mtc.
		03.05.16	09.30	13.06.16	15.00	Stopped due to low demand and high frequency
		13.06.16	15.00	16.06.16	17.15	Machine shut down for planned maintenance due to annual testing of generator transformer .
		16.06.16	17.15	26.06.16	15.20	Stopped due to low demand and high frequency
		02.08.16	15.29	02.08.16	16.14	Machine tripped due to failure of primary DPU Card
		06.08.16	11.07	06.08.16	13.59	Machine tripped due to rebooting of Mark VI.
		01.09.16	08.45	05.09.16	12.00	Machine shutdown for attending internal fault
		05.09.16	12.00	30.11.16	23.59	Stopped due to low demand and high frequency
		04.12.16	07.07	04.12.16	09.16	
		07.12.16	08.16	07.12.16	11.55	
		09.12.16	01.27	09.12.16	08.48	
09.12.16	10.28	09.12.16	12.28			

Unit	Capacity in MW	Outage		Synchronization		Reason of Outage
		Date	Time	Date	Time	
3	216	08.01.16	23.15	18.04.16	05.23	Stopped due to low demand and high frequency
		18.04.16	11.16	18.04.16	19.12	Unit tripped
		03.05.16	06.08	03.05.16	08.57	Machine shutdown for planned mtc.
		23.05.16	19.04	10.08.16	14.00	Stopped due to low demand and high frequency
		10.08.16	14.00	18.08.16	00.00	Machine is shutdown for palnnd mtc.
		01.09.16	00.00	19.09.16	18.59	Stopped due to low demand and high frequency
		23.09.16	23.59	29.09.16	22.16	
		07.10.16	11.43	07.10.16	15.48	Machine tripped due to stator earth fault.
		14.10.16	17.30	31.12.16	23.59	Stopped due to low demand and high frequency

Unit	Capacity in MW	Outage		Synchronization		Reason of Outage
		Date	Time	Date	Time	
4	216	08.01.16	23.15	03.05.16	06.00	Stopped due to low demand and high frequency
		03.05.16	06.00	03.05.16	09.30	Machine shutdown for planned mtc.
		03.05.16	09.30	27.05.16	01.12	Stopped due to low demand and high frequency
		30.05.16	11.16	05.09.16	00.44	
		05.10.16	13.00	14.10.16	13.30	
		29.10.16	00.02	31.10.16	23.59	
		01.11.16	00.00	09.11.16	23.59	
		30.11.16	08.50	30.11.16	17.43	Unit desynchronised as inlet air DP high.
		30.11.16	17.43	31.12.16	23.59	Stopped due to low demand and high frequency

Unit	Capacity in MW	Outage		Synchronization		Reason of Outage
		Date	Time	Date	Time	
STG-2	254	28.03.16	00.00	30.04.16	23.59	Planned shutdown
		03.05.16	06.00	03.05.16	09.30	Machine shutdown for planned mtc.
		03.05.16	06.10	03.05.16	10.39	Machine shutdown for planned mtc.
		06.05.16	16.45	06.05.16	17.44	Unit tripped
		23.05.16	19.06	27.05.16	08.24	Stopped due to low demand and high frequency
		27.05.16	11.18	05.09.16	11.03	
		20.09.16	07.05	20.09.16	08.02	HRS#3 taken out of service due to internal fault.
		07.10.16	11.43	07.10.16	17.48	STG desynchronized due to tripping of unit -3
		18.10.16	03.55	18.10.16	10.10	Machine tripped due to internal problem
		29.10.16	00.03	31.10.16	23.59	Stopped due to low demand and high frequency
		01.11.16	00.00	10.11.16	04.07	
		10.11.16	05.38	10.11.16	07.44	Unit desynchronised on internal fault.
		11.11.16	14.57	11.11.16	15.34	Unit desynchronised on internal fault.
		30.11.16	08.52	30.11.16	17.43	STG#2 desynchronised as inlet air DP high.
30.11.16	17.43	31.12.16	23.59	Stopped due to low demand and high frequency		

(F) RITHALA POWER STATION

Unit	Capacity in MW	Outage		Synchronization		Reason of Outage
		Date	Time	Date	Time	
1	31.8	19.03.13	17:32	31.12.16	23.59	Stopped due to low demand and high frequency

Unit	Capacity in MW	Outage		Synchronization		Reason of Outage
		Date	Time	Date	Time	
2	31.8	07.06.13	22:41	31.12.16	23.59	Stopped due to low demand and high frequency

Unit	Capacity in MW	Outage		Synchronization		Reason of Outage
		Date	Time	Date	Time	
STG	31.8	07.06.13	22:38	31.12.16	23.59	Stopped due to low demand and high frequency

ALLOCATION OF POWER TO DELHI

A)

Time block 00.00hrs. to 24.00hrs. @ 0% allocation from Unallocated Quota from 01.04.2016

Name of the Stn	Installed capacity	Total Un-allocated	Basic Allocation	Basic Allocation at periphery	Allocation out of Unallocated Quota	Allocation out of Un-allocation Quota at Delhi periphery	Total allocation at Delhi periphery
1	2	3	4	5	6	7	(8)=(5)+(7)
<u>NTPC STATIONS</u>							
Singrauli STPS	2000	300	150	130	0	0	130
Rihand-I	1000	150	100	87	0	0	87
Rihand Stage -II	1000	150	126	109	0	0	109
Rihand Stage -III	1000	150	132	115	0	0	115
ANTA GPS	419	63	44	41	0	0	41
Auriya GPS	663.36	99	72	67	0	0	67
Dadri GPS	829.78	129	91	85	0	0	85
Dadri NCTPS (Th)	840	0	756	657	0	0	657
Dadri NCTPS (Th) Stage-II	980	147	735	639	0	0	639
Unchahaar-I TPS	420	20	24	21	0	0	21
Unchahaar-II TPS	420	63	47	41	0	0	41
Unchahaar-III TPS	210	31	29	25	0	0	25
Koldam HEP	800	120	56	53	0	0	53
TOTAL	10582	1422	2362	2069	0	0	2069
<u>NHPC</u>							
Baira Suil HPS	180	0	20	19	0	0	19
Salal HPS	690	0	80	76	0	0	76
Tanakpur HEP	94	0	12	11	0	0	11
Chamera HEP	540	0	43	41	0	0	41
Chamera-II HEP	300	54	40	38	0	0	38
Chamera-III HEP	231	35	29	28	0	0	28
URI-I HEP	480	0	53	50	0	0	50
URI-II HEP	240	0	32	31	0	0	31
Sewa HEP	120	18	16	15	0	0	15
Dhauri Ganga HEP	280	42	37	35	0	0	35
Dulhasti HEP	390	58	50	48	0	0	48
Parbati-III HEP	520	66	66	63	0	0	63
TOTAL	4065	272	479	455	0	0	455
<u>NPC</u>							
Narora APS	440	64	47	41	0	0	41
RAPP (C)	440	64	56	49	0	0	49
TOTAL	880	128	103	89	0	0	89
<u>SVJNL</u>							
Nathpa Jhakri HEP	1500	149	142	135	0	0	135
<u>THDC</u>							
Tehri Hydro	1000	99	63	60	0	0	60
Koteshwar HEP	400	40	39	37	0	0	37
TOTAL	1400	139	102	97	0	0	97
Total	18427	2110	3188	2846	0	0	2846
<u>Allocation from ER and Tala HEP</u>							
Farakka	1600	0	22	19	0	0	19
Kahalgaon	840	0	51	43	0	0	43
Talchar	1000	0	0	0	0	0	0
Tala HEP	1020	153	30	25	0	0	25
Kahalgaon-II	1500	0	157	131	0	0	131
Total ER	5960	153	261	217	0	0	217
<u>Joint Venture</u>							
Jhajjar TPS	1500	114	643	577	0	0	577
Ultra Mega Projects							
Sasan	3960	0	446	383	0	0	383
Grand Total	29847	2377	4536	4023	0	0	4023

5 ALLOCATION OF POWER TO DISCOMS

A) ALLOCATION OF POWER TO VARIOUS LICENCEES AS PER ORDER OF DERC AND DECISION OF GNCTD FOR ALLOCATION OF CENTRAL SECTOR STATIONS (DADRI THERMAL & BTPS) AND STATE SECTOR GENERATING STATIONS w.e.f. 06.08.2013.

(Allocation In %)

(A) 10.00hrs. to 17.00hrs.

SOURCES	LICENSEES					
	NDMC	MES	NDPL	BRPL	BYPL	TOTAL
1. Central Sector without Dadri (Th)	0	0	29.18	43.58	27.24	100.00
2. Dadri (Th)	16.63	0	24.22	36.86	22.39	100.00
3. BTPS	17.73	7.09	21.81	33.2	20.17	100.00
4. RPH	0	0	29.025	44.133	26.842	100.00
5. GT	0	0	29.02	44.16	26.82	100.00
6. Pragati	30.3	0	20.22	30.78	18.7	100.00
7. DVC	0	0	29.18	43.58	27.24	100.00
8. BAWANA CCGT*	7.30	1.82	20.688	30.888	19.304	80.00

(B) 00.00hrs. to 10.00hrs. and 17.00hrs. to 24.00hrs.

SOURCES	LICENSEES					
	NDMC	MES	NDPL	BRPL	BYPL	TOTAL
1. Central Sector without Dadri (Th)	0	0	29.18	43.58	27.24	100.00
2. Dadri (Th)	16.53	0	24.22	36.86	22.39	100.00
3. BTPS	17.73	7.09	21.81	33.2	20.17	100.00
4. RPH	0	0	29.025	44.133	26.842	100.00
5. GT	0	0	29.02	44.16	26.82	100.00
6. Pragati	30.3	0	20.22	30.78	18.7	100.00
7. DVC	0	0	29.18	43.58	27.24	100.00
8. BAWANA CCGT*	7.30	1.82	20.688	30.888	19.304	80.00

* 20% POWER OF BAWANA CCGT ALLOCATED TO HARYANA (10%) & PUNJAB (10%)

6 POWER AVAILABILITY-DEMAND POSITION AT THE TIME OF PEAK DEMAND MET DURING DECEMBER 2016

All figures in MW

Date	Time of peak demand	Generation within Delhi										Import from the Grid	Schedule from the Grid	OD(-)/UD(+)	Demand met	Shedding	Un-Restricted Demand
		RP H	GT	PPCL	Rithal a	Bawana	Tow mcl	East Delhi	DMS WL	BTPS	Total						
(1)	(2)	(3)	(4)	(5)	(6)	(7)	(8)				(9)= (3) to (8)	(10)	(11)	(12)= (11) - (10)	(13)= (11)+ (12)	(14)	(15)= (13)+ (14)
1	19.12.18	0	77	266	0	276	10	4	3	-4	632	2572	2387	185	3204	0	3204
2	10.47.10	0	77	268	0	251	4	0	0	-4	596	2723	2502	221	3319	0	3319
3	10.00.00	0	78	266	0	251	15	0	0	-4	606	2416	2223	193	3022	0	3022
4	11.06.37	0	75	299	0	302	10	4	0	-4	686	2406	2421	-15	3092	0	3092
5	11.10.49	0	76	266	0	252	16	0	0	-4	606	2448	2542	-94	3054	0	3054
6	10.00.55	0	68	266	0	325	14	0	0	-4	669	2463	2533	-70	3132	0	3132
7	10.14.05	0	41	266	0	25	15	0	0	-4	343	2927	2820	107	3270	0	3270
8	09.57.09	0	81	262	0	253	15	7	0	-4	614	2638	2502	136	3252	0	3252
9	10.02.55	0	68	263	0	252	16	15	0	-4	610	2794	2824	-30	3404	0	3404
10	10.20.05	0	70	175	0	253	14	0	0	-4	508	2674	2624	50	3182	0	3182
11	10.48.19	0	67	263	0	251	14	0	0	-4	591	2623	2595	28	3214	0	3214
12	10.03.09	0	79	264	0	292	16	0	0	-4	647	2746	2541	205	3393	0	3393
13	10.14.58	0	79	264	0	252	14	0	0	-4	605	2658	2723	-65	3263	6	3269
14	10.23.21	0	79	263	0	267	15	0	0	-4	620	2676	2690	-14	3296	0	3296
15	10.43.08	0	79	264	0	253	13	0	0	-4	605	2666	2611	55	3271	0	3271
16	10.18.46	0	68	268	0	250	14	0	0	-4	596	2898	2656	242	3494	0	3494
17	09.53.44	0	68	150	0	303	16	0	0	-4	533	2775	2666	109	3308	0	3308
18	10.30.00	0	80	149	0	251	14	0	0	-3	491	2862	2739	123	3353	0	3353
19	09.50.23	0	80	265	0	249	14	0	0	-3	605	2786	2648	138	3391	0	3391
20	09.48.06	0	81	297	0	301	13	0	0	-3	689	2738	2599	139	3427	0	3427
21	10.57.22	0	74	157	0	248	12	0	0	-3	488	3055	2865	190	3543	7	3550
22	10.16.33	0	76	155	0	247	12	0	0	-4	486	2862	2811	51	3348	0	3348
23	10.28.11	0	76	157	0	249	13	0	0	-4	491	3269	2867	402	3760	0	3760
24	10.12.29	0	74	155	0	249	1	0	0	-4	475	2863	2886	-23	3338	0	3338
25	11.07.25	0	73	155	0	251	9	0	0	-4	484	2974	2797	177	3458	0	3458
26	10.16.00	0	74	160	0	290	10	0	0	-4	530	3033	3076	-43	3563	0	3563
27	10.19.47	0	74	159	0	289	12	0	0	-4	530	3033	2969	64	3563	4	3567
28	10.20.00	0	74	158	0	334	11	0	0	-4	573	3064	2887	177	3637	0	3637
29	10.42.00	0	70	161	0	253	9	0	0	-3	490	3089	2907	182	3579	0	3579
30	10.33.06	0	73	163	0	319	11	0	0	-3	563	3294	3105	189	3857	0	3857
31	10.21.00	0	29	162	0	283	0	0	0	-3	471	3086	2945	141	3557	0	3557

POWER AVAILABILITY- DEMAND POSITION AT THE TIME OF MAXIMUM UNRESTRICTED DEMAND DURING DECEMBER 2016

Date	Time of peak demand	Generation within Delhi										Import from the Grid	Schedule from the Grid	OD(-)/UD(+)	Demand met	Shedding	Un-Restricted Demand
		RP H	GT	PPCL	Rithal a	Bawana	Tow mcl	East Delhi	DMS WL	BTPS	Total						
(1)	(2)	(3)	(4)	(5)	(6)	(7)	(8)				(9)=(3) to (8)	(10)	(11)	(12)=(11) - (10)	(13)=(11)+ (12)	(14)	(15)=(13)+ (14)
1	19.12.18	0	77	266	0	276	10	4	3	-4	632	2572	2387	185	3204	0	3204
2	10.47.10	0	77	268	0	251	4	0	0	-4	596	2723	2502	221	3319	0	3319
3	10.00.00	0	78	266	0	251	15	0	0	-4	606	2416	2223	193	3022	0	3022
4	11.06.37	0	75	299	0	302	10	4	0	-4	686	2406	2421	-15	3092	0	3092
5	11.10.49	0	76	266	0	252	16	0	0	-4	606	2448	2542	-94	3054	0	3054
6	10.00.55	0	68	266	0	325	14	0	0	-4	669	2463	2533	-70	3132	0	3132
7	10.14.05	0	41	266	0	25	15	0	0	-4	343	2927	2820	107	3270	0	3270
8	09.57.09	0	81	262	0	253	15	7	0	-4	614	2638	2502	136	3252	0	3252
9	10.02.55	0	68	263	0	252	16	15	0	-4	610	2794	2824	-30	3404	0	3404
10	10.20.05	0	70	175	0	253	14	0	0	-4	508	2674	2624	50	3182	0	3182
11	10.48.19	0	67	263	0	251	14	0	0	-4	591	2623	2595	28	3214	0	3214
12	10.03.09	0	79	264	0	292	16	0	0	-4	647	2746	2541	205	3393	0	3393
13	10.14.58	0	79	264	0	252	14	0	0	-4	605	2658	2723	-65	3263	6	3269
14	10.23.21	0	79	263	0	267	15	0	0	-4	620	2676	2690	-14	3296	0	3296
15	10.43.08	0	79	264	0	253	13	0	0	-4	605	2666	2611	55	3271	0	3271
16	10.18.46	0	68	268	0	250	14	0	0	-4	596	2898	2656	242	3494	0	3494
17	09.53.44	0	68	150	0	303	16	0	0	-4	533	2775	2666	109	3308	0	3308
18	10.30.00	0	80	149	0	251	14	0	0	-3	491	2862	2739	123	3353	0	3353
19	09.50.23	0	80	265	0	249	14	0	0	-3	605	2786	2648	138	3391	0	3391
20	09.48.06	0	81	297	0	301	13	0	0	-3	689	2738	2599	139	3427	0	3427
21	10.57.22	0	74	157	0	248	12	0	0	-3	488	3055	2865	190	3543	7	3550
22	10.16.33	0	76	155	0	247	12	0	0	-4	486	2862	2811	51	3348	0	3348
23	10.28.11	0	76	157	0	249	13	0	0	-4	491	3269	2867	402	3760	0	3760
24	10.12.29	0	74	155	0	249	1	0	0	-4	475	2863	2886	-23	3338	0	3338
25	11.07.25	0	73	155	0	251	9	0	0	-4	484	2974	2797	177	3458	0	3458
26	10.16.00	0	74	160	0	290	10	0	0	-4	530	3033	3076	-43	3563	0	3563
27	10.19.47	0	74	159	0	289	12	0	0	-4	530	3033	2969	64	3563	4	3567
28	10.20.00	0	74	158	0	334	11	0	0	-4	573	3064	2887	177	3637	0	3637
29	10.42.00	0	70	161	0	253	9	0	0	-3	490	3089	2907	182	3579	0	3579
30	10.33.06	0	73	163	0	319	11	0	0	-3	563	3294	3105	189	3857	0	3857
31	10.21.00	0	29	162	0	283	0	0	0	-3	471	3086	2945	141	3557	0	3557

SOURCEWISE SCHEDULED DRAWL FROM NORTHERN GRID AS WELL AS AVAILABILITY WITHIN DELHI FOR DECEMBER 2016

A) AVAILABILITY FROM GENCO AND PRAGATI STNs. (all fig in MUs)

A (i) RPH	0.00
(ii) GT+STG	60.417
(iii) PRAGATI	166.298
(iv) RITHALA	0.000
(v) BAWANA CCGT	194.786
(vi) Timarpur ó Okhla	10.932
(vii)	0.311
(viii)	0.009
TOTAL	432.753
B) AVAILABILITY FROM BTPS	-4.975
C) AUXILIARY CONSUMPTION OF GENERATING STNs. EXCLUDING BTPS	14.040
D) NET GENERATION AVAILABLE WITHIN DELHI(A+B-C)	413.738

B) SOURCE WISE SCHEDULED DRAWL FROM THE NORTHERN GRID

NAME OF THE STATION	AVAILABILITY AT POWER PLANT	AVAILABILITY AT DELHI PERIPHERY	ALLOCATION MADE BY NRLDC AT POWER PLANT	ALLOCATION MADE BY NRLDC AT DELHI PERIPHERY
B/SUIL	1.505	1.432	1.505	1.432
SALAL	7.564	7.198	7.564	7.198
SASAN	280.265	266.393	258.907	246.139
TANKAPUR	2.206	2.098	2.206	2.098
CHAMERA	3.346	3.182	3.346	3.182
CHAMERA -II	4.373	4.159	4.373	4.159
CHAMERA -III	2.091	1.989	2.091	1.989
DHAULIGANGA	3.901	3.712	3.901	3.712
SEWA -2	0.993	0.944	0.993	0.944
URI	6.119	5.819	6.119	5.819
URI-II	5.138	4.887	5.138	4.887
KOLDAM	0.000	0.000	0.000	0.000
KOTESHWAR	7.884	7.487	7.884	7.487
PARBATI3	1.673	1.591	1.673	1.591
RAMPUR	0.000	0.000	0.000	0.000
MUNDRA_UMPP	0.000	0.000	0.000	0.000
ANTA (GAS)	0.000	0.000	0.000	0.000
ANTA (RLNG)	0.000	0.000	0.000	0.000
ANTA (LIQUID)	32.244	30.652	0.000	0.000
DADRI (GAS)	28.858	27.432	5.564	5.292
DADRI (RLNG)	0.000	0.000	0.000	0.000
DADRI (LIQUID)	32.763	31.147	0.000	0.000
AURAIYA (GAS)	0.000	0.000	0.000	0.000
AURAIYA (RLNG)	0.000	0.000	0.000	0.000
AURAIYA (LIQUID)	50.716	48.214	0.000	0.000
SINGRAULI	100.421	95.460	83.430	79.379
RIHAND -I	62.335	59.293	47.274	44.970
RIHAND -II	88.750	84.383	70.444	66.998
RIHAND -III	89.673	85.308	71.694	68.222
UNCHA HAR-I	15.718	14.938	12.013	11.415
UNCHA HAR-II	33.697	32.035	25.992	24.705
UNCHA HAR-III	20.787	19.762	16.032	15.239
DADRI (TH)	545.724	518.825	110.836	105.474
DADRI (TH) STAGE-II	543.313	516.533	264.653	251.420
NAPP	32.917	31.290	32.917	31.290
RAPP 'B'	0.000	0.000	0.000	0.000
RAPP 'C'	20.877	19.846	20.877	19.846
NATHPA JHAKRI	20.334	19.345	15.169	14.431
DULASTI	12.002	11.412	12.002	11.412
TEHRI	14.122	13.412	14.122	13.412
JHAJJAR	489.230	465.087	8.334	7.983

NAME OF THE STATION	AVAILABILITY AT POWER PLANT	AVAILABILITY AT DELHI PERIPHERY	ALLOCATION MADE BY NRLDC AT POWER PLANT	ALLOCATION MADE BY NRLDC AT DELHI PERIPHERY
KHELGAON	34.156	32.470	20.286	19.273
KHELGAON-II	109.724	104.322	77.384	73.496
FARAKA	14.069	13.379	7.900	7.508
TALA	5.383	5.123	5.383	5.123
TALCHER	0.000	0.000	0.000	0.000
DVC	228.686	226.409	226.409	214.994
HARYANA	0.000	0.000	0.000	0.000
KARNATAKA	0.000	0.000	0.000	0.000
MEGHALAYA	0.000	0.000	0.000	0.000
UTTRANCHAL	0.000	0.000	0.000	0.000
ASSAM	0.000	0.000	0.000	0.000
BIHAR	0.000	0.000	0.000	0.000
METHON POWER(NDPL)LT-06	188.565	187.190	187.190	177.934
DVC MEJIA (LT-08)(BYPL)	62.173	61.554	61.554	58.523
URS	0.000	0.000	0.000	0.000
JAMMU & KASHMIR	0.000	0.000	0.000	0.000
HIMACHAL PRADESH	0.441	0.436	0.436	0.410
PUNJAB	14.427	14.150	14.150	13.341
UTTAR PRADESH	7.424	7.330	7.330	6.918
CHATTISHGARH	0.000	0.000	0.000	0.000
DVC LT-9	0.000	0.000	0.000	0.000
HARYANA (LT-05)	54.053	53.536	53.536	50.883
RAJASTHAN	0.000	0.000	0.000	0.000
NEPAL	0.000	0.000	0.000	0.000
RAJASTHAN(SOLAR) BRPL-LT36	3.408	3.316	3.316	3.152
RAJASTHAN(SOLAR) BYPL - LT-35	3.471	3.377	3.377	3.210
RAJASTHAN(SOLAR) TPDDL LT-31	3.377	3.286	3.286	3.123
TO JAMMU & KASHMIR	-57.743	-58.237	-58.237	-60.812
TO ASSAM	0.000	0.000	0.000	0.000
TO KARNATAKA	0.000	0.000	0.000	0.000
TO MEGHALAYA	-58.038	-59.269	-59.269	-62.380
TO PUNJAB	0.000	0.000	0.000	0.000
TO UTTRANCHAL	-17.819	-18.071	-18.071	-19.011
TO HARYANA	0.000	0.000	0.000	0.000
TO BIHAR	-29.760	-30.380	-30.380	-31.963
TO RAJASTHAN	-42.673	-43.970	-43.970	-46.256
TO NEPAL	-21.202	-21.449	-21.449	-22.565
BTPS TO MP	0.000	0.000	0.000	0.000
TO HIMACHAL PRADESH	-1.014	-1.041	-1.041	-1.079
TO ORISSA	0.000	0.000	0.000	0.000
POWER EXCHANGE(IEX)	62.166	58.840	62.166	58.840
TO POWER EXCHANGE (IEX)	-103.287	-108.357	-103.287	-108.357
POWER EXCHANGE(PX)	0.000	0.000	0.000	0.000
TO POWER EXCHANGE (PX)	-0.002	-0.002	-0.002	-0.002
TO SHARE PROJECT (HARYANA)	-17.277	-18.177	-17.277	-18.177
TO SHARE PROJECT (PUNJAB)	-17.839	-18.777	-17.839	-18.777
TOTAL	2986.404	2832.252	1479.933	1369.473

C) AGENCY WISE BREAKUP OF ENERGY SCHEDULED DRAWL FROM THE GRID

NAME OF THE STATION	AVAILABILITY AT POWER PLANT	AVAILABILITY AT DELHI PERIPHERY	ALLOCATION MADE BY NRLDC AT POWER PLANT	ALLOCATION MADE BY NRLDC AT DELHI PERIPHERY
NTPC - NR	1644.997	1563.981	707.932	673.114
NTPC - ER	157.949	150.172	105.570	100.277
NHPC	50.909	48.422	50.909	48.422
NPC	53.794	51.136	53.794	51.136
SASAN	280.265	266.393	258.907	246.139
KOTESHWAR	7.884	7.487	7.884	7.487
MUNDRA_UMPP	0.000	0.000	0.000	0.000
NATHPA JHAKRI	20.334	19.345	15.169	14.431
TEHRI	14.122	13.412	14.122	13.412
TALA	5.383	5.123	5.383	5.123
JHAJJAR	489.230	465.087	8.334	7.983
TALCHER	0.000	0.000	0.000	0.000
RAJASTHAN SOLAR(BRPL)T-36	3.408	3.316	3.316	3.152
RAJASTHAN SOLAR(BYPL)T-35	3.471	3.377	3.377	3.210
RAJASTHAN SOLAR(TPDDL)T-31	3.377	3.286	3.286	3.123
DVC	228.686	226.409	226.409	214.994
HARYANA	0.000	0.000	0.000	0.000
KARNATAKA	0.000	0.000	0.000	0.000
MEGHALAYA	0.000	0.000	0.000	0.000
UTTRANCHAL	0.000	0.000	0.000	0.000
ASSAM	0.000	0.000	0.000	0.000
BIHAR	0.000	0.000	0.000	0.000
METHON POWER (NDPL)-LT-06	188.565	187.190	187.190	177.934
DVC MEJIA (LT-08)(BYPL)	62.173	61.554	61.554	58.523
URS	0.000	0.000	0.000	0.000
JAMMU & KASHMIR	0.000	0.000	0.000	0.000
HIMACHAL PRADESH	0.441	0.436	0.436	0.410
PUNJAB	14.427	14.150	14.150	13.341
UTTAR PRADESH	7.424	7.330	7.330	6.918
CHATTISHGARH	0.000	0.000	0.000	0.000
DVC (FOR NDPL) LT-09	0.000	0.000	0.000	0.000
HARYANA (LT -05)	54.053	53.536	53.536	50.883
RAJASTHAN	0.000	0.000	0.000	0.000
NEPAL	0.000	0.000	0.000	0.000
POWER EXCHANGE(IEX)	62.166	58.840	62.166	58.840
POWER EXCHANGE(PX)	0.000	0.000	0.000	0.000
TOTAL	3353.058	3209.981	1850.754	1758.852

D) AGENCY WISE BREAKUP OF ENERGY SCHEDULED BY NRLDC FOR EXPORT TO OTHER UTILITIES FROM DTL

NAME OF THE STATION	AVAILABILITY AT POWER PLANT	AVAILABILITY AT PERIPHERY	ALLOCATION MADE BY NRLDC AT POWER PLANT	ALLOCATION MADE BY NRLDC AT POWER PERIPHERY
TO JAMMU & KASHMIR	-57.743	-58.237	-58.237	-60.812
TO ASSAM	0.000	0.000	0.000	0.000
TO KARNATAKA	0.000	0.000	0.000	0.000
TO MEGHALAYA	-58.038	-59.269	-59.269	-62.380
TO UTTRANCHAL	-17.819	-18.071	-18.071	-19.011
TO PUNJAB	0.000	0.000	0.000	0.000
TO HARYANA	0.000	0.000	0.000	0.000
TO BIHAR	-29.760	-30.380	-30.380	-31.963
TO RAJASTHAN	-42.673	-43.970	-43.970	-46.256
TO NEPAL	-21.202	-21.449	-21.449	-22.565
BTPS TO MP	0.000	0.000	0.000	0.000
TO HIMACHAL PRADESH	-1.014	-1.041	-1.041	-1.079
TO ORISSA	0.000	0.000	0.000	0.000
TO POWER EXCHANGE (IEX)	-103.287	-108.357	-103.287	-108.357
TO POWER EXCHANGE (PX)	-0.002	-0.002	-0.002	-0.002
TO SHARE PROJECT (HARYANA)	-17.277	-18.177	-17.277	-18.177
TO SHARE PROJECT (PUNJAB)	-17.839	-18.777	-17.839	-18.777
TOTAL	-366.654	-377.729	-370.821	-389.379
TOTAL SCHEDULED DRAWAL FROM THE GRID	2986.404	2832.252	1479.933	1369.473

TOTAL CONSUMPTION INCLUDING AUX. OF GENERATING STNs. EXCLUDING BTPS	1804.541
NET CONSUMPTION	1790.501
AVAILABILITY WITHIN DELHI	413.738
ACTUAL DRAWAL FROM THE GRID	1376.763
OVER DRAWAL(+)/UNDER DRAWAL(-) FROM THE GRID ON THE BASIS OF SCHEDULED ALLOCATION MADE BY NRLDC TO DELHI AT PERIPHERY	7.290
LOAD SHEDDING	0.949
UNRESTRICTED DEMAND (GROSS)	1805.490
UNRESTRICTED DEMAND (NET)	1791.450
MAX. NET CONSUMPTION	63.033 ON 30.12.2017
MAX. LOAD SHEDDING	324MW ON 21.12.2017 AT 11.00HRS.
PEAK LOAD	Peak Demand during the month
DAY PEAK	3857MW AT 10.33.06HRS ON 30.12.2017
EVENING PEAK	3223MW AT 18.30HRS ON 30.12.2017
P.L.F. OF GENCO AND PRAGATI STNs.	RPH GT PRAGATI RITHALA BAWANA Timarpur Okhla EDWPCL DMSWL
	0.00% 30.08% 67.73% 0.00% 19.10% 91.83% 3.48% 0.05%

DATE	No. of Under Freq. Relay Operated	Shedding due to under frequency relay operation in MUs					Shedding due to Grid Restrictions (Over drawal / low freq.)				
		BSES		NDPL	NDMC	TOTAL	BSES		NDPL	NDMC	MES
		BYPL	BRPL				BYPL	BRPL			
1	2	3	4	5	6	7=3 to 6	8	9	10	11	12
01.Dec.16	0	0.000	0.000	0.000	0.000	0.000	0.000	0.000	0.000	0.000	0.000
02.Dec.16	0	0.000	0.000	0.000	0.000	0.000	0.000	0.015	0.005	0.000	0.000
03.Dec.16	0	0.000	0.000	0.000	0.000	0.000	0.000	0.000	0.000	0.000	0.000
04.Dec.16	0	0.000	0.000	0.000	0.000	0.000	0.000	0.000	0.000	0.000	0.000
05.Dec.16	0	0.000	0.000	0.000	0.000	0.000	0.000	0.000	0.000	0.000	0.000
06.Dec.16	0	0.000	0.000	0.000	0.000	0.000	0.000	0.000	0.000	0.000	0.000
07.Dec.16	0	0.000	0.000	0.000	0.000	0.000	0.000	0.000	0.000	0.000	0.000
08.Dec.16	0	0.000	0.000	0.000	0.000	0.000	0.000	0.000	0.000	0.000	0.000
09.Dec.16	0	0.000	0.000	0.000	0.000	0.000	0.000	0.000	0.000	0.000	0.000
10.Dec.16	0	0.000	0.000	0.000	0.000	0.000	0.000	0.000	0.000	0.000	0.000
11.Dec.16	0	0.000	0.000	0.000	0.000	0.000	0.000	0.000	0.000	0.000	0.000
12.Dec.16	0	0.000	0.000	0.000	0.000	0.000	0.000	0.014	0.000	0.000	0.000
13.Dec.16	0	0.000	0.000	0.000	0.000	0.000	0.000	0.000	0.000	0.000	0.000
14.Dec.16	0	0.000	0.000	0.000	0.000	0.000	0.000	0.000	0.000	0.000	0.000
15.Dec.16	0	0.000	0.000	0.000	0.000	0.000	0.000	0.000	0.000	0.000	0.000
16.Dec.16	0	0.000	0.000	0.000	0.000	0.000	0.000	0.000	0.000	0.000	0.000
17.Dec.16	0	0.000	0.000	0.000	0.000	0.000	0.000	0.000	0.000	0.000	0.000
18.Dec.16	0	0.000	0.000	0.000	0.000	0.000	0.000	0.000	0.000	0.000	0.000
19.Dec.16	0	0.000	0.000	0.000	0.000	0.000	0.000	0.000	0.000	0.000	0.000
20.Dec.16	0	0.000	0.000	0.000	0.000	0.000	0.000	0.015	0.000	0.000	0.000
21.Dec.16	0	0.000	0.000	0.000	0.000	0.000	0.000	0.000	0.000	0.000	0.000
22.Dec.16	0	0.000	0.000	0.000	0.000	0.000	0.000	0.000	0.000	0.000	0.000
23.Dec.16	0	0.000	0.000	0.000	0.000	0.000	0.000	0.000	0.000	0.000	0.000
24.Dec.16	0	0.000	0.000	0.000	0.000	0.000	0.000	0.000	0.000	0.000	0.000
25.Dec.16	0	0.000	0.000	0.000	0.000	0.000	0.000	0.000	0.000	0.000	0.000
26.Dec.16	0	0.000	0.000	0.000	0.000	0.000	0.000	0.000	0.000	0.000	0.000
27.Dec.16	0	0.000	0.000	0.000	0.000	0.000	0.000	0.000	0.000	0.000	0.000
28.Dec.16	0	0.000	0.000	0.000	0.000	0.000	0.000	0.018	0.000	0.000	0.000
29.Dec.16	0	0.000	0.000	0.000	0.000	0.000	0.000	0.000	0.000	0.000	0.000
30.Dec.16	0	0.000	0.000	0.000	0.000	0.000	0.000	0.000	0.000	0.000	0.000
31.Dec.16	0	0.000	0.000	0.000	0.000	0.000	0.000	0.000	0.000	0.000	0.000
TOTAL	0	0.000	0.000	0.000	0.000	0.000	0.000	0.062	0.005	0.000	0.000

ALL FIGURES IN MUS

Date	Shedding due to Transmission/Grid Constraints in Central Sector Stations / TTC / ATC VOILATION				DUE TO NEW GRID CODE REGULATION DEVIATOIN			Shedding due to Transmission/Grid Constraints in Central sector stations				Total 24=8 to 23	Total shedding due to grid restrictions 25=7+24
	BSES		NDPL	NDMC	BSES			TPDDL	BSES		NDMC		
	BYPL	BRPL			BYPL	BRPL	TPDDL		BYPL	BRPL			
	13	14	15	16	17	18	19	20	21	22	23		
01.Dec.16	0.000	0.000	0.000	0.000	0.000	0.000	0.000	0.000	0.000	0.000	0.000	0.000	0.000
02.Dec.16	0.000	0.000	0.000	0.000	0.000	0.000	0.000	0.000	0.000	0.000	0.000	0.020	0.020
03.Dec.16	0.000	0.000	0.000	0.000	0.000	0.000	0.000	0.000	0.000	0.000	0.000	0.000	0.000
04.Dec.16	0.000	0.000	0.000	0.000	0.000	0.000	0.000	0.000	0.000	0.000	0.000	0.000	0.000
05.Dec.16	0.000	0.000	0.000	0.000	0.000	0.000	0.000	0.000	0.000	0.000	0.000	0.000	0.000
06.Dec.16	0.000	0.000	0.000	0.000	0.000	0.000	0.000	0.000	0.000	0.000	0.000	0.000	0.000
07.Dec.16	0.000	0.000	0.000	0.000	0.000	0.000	0.000	0.000	0.000	0.000	0.000	0.000	0.000
08.Dec.16	0.000	0.000	0.000	0.000	0.000	0.000	0.000	0.000	0.000	0.000	0.000	0.000	0.000
09.Dec.16	0.000	0.000	0.000	0.000	0.000	0.000	0.000	0.000	0.000	0.000	0.000	0.000	0.000
10.Dec.16	0.000	0.000	0.000	0.000	0.000	0.000	0.000	0.000	0.000	0.000	0.000	0.000	0.000
11.Dec.16	0.000	0.000	0.000	0.000	0.000	0.000	0.000	0.000	0.000	0.000	0.000	0.000	0.000
12.Dec.16	0.000	0.000	0.000	0.000	0.000	0.000	0.000	0.000	0.000	0.000	0.000	0.014	0.014
13.Dec.16	0.000	0.000	0.000	0.000	0.000	0.000	0.000	0.000	0.000	0.000	0.000	0.000	0.000
14.Dec.16	0.000	0.000	0.000	0.000	0.000	0.000	0.000	0.000	0.000	0.000	0.000	0.000	0.000
15.Dec.16	0.000	0.000	0.000	0.000	0.000	0.000	0.000	0.000	0.000	0.000	0.000	0.000	0.000
16.Dec.16	0.000	0.000	0.000	0.000	0.000	0.000	0.000	0.000	0.000	0.000	0.000	0.000	0.000
17.Dec.16	0.000	0.000	0.000	0.000	0.000	0.000	0.000	0.000	0.000	0.000	0.000	0.000	0.000
18.Dec.16	0.000	0.000	0.000	0.000	0.000	0.000	0.000	0.000	0.000	0.000	0.000	0.000	0.000
19.Dec.16	0.000	0.000	0.000	0.000	0.000	0.000	0.000	0.000	0.000	0.000	0.000	0.000	0.000
20.Dec.16	0.000	0.000	0.000	0.000	0.000	0.000	0.000	0.000	0.000	0.000	0.000	0.015	0.015
21.Dec.16	0.000	0.000	0.000	0.000	0.000	0.000	0.000	0.000	0.000	0.000	0.000	0.000	0.000
22.Dec.16	0.000	0.000	0.000	0.000	0.000	0.000	0.000	0.000	0.000	0.000	0.000	0.000	0.000
23.Dec.16	0.000	0.000	0.000	0.000	0.000	0.000	0.000	0.000	0.000	0.000	0.000	0.000	0.000
24.Dec.16	0.000	0.000	0.000	0.000	0.000	0.000	0.000	0.000	0.000	0.000	0.000	0.000	0.000
25.Dec.16	0.000	0.000	0.000	0.000	0.000	0.000	0.000	0.000	0.000	0.000	0.000	0.000	0.000
26.Dec.16	0.000	0.000	0.000	0.000	0.000	0.000	0.000	0.000	0.000	0.000	0.000	0.000	0.000
27.Dec.16	0.000	0.000	0.000	0.000	0.000	0.000	0.000	0.000	0.000	0.000	0.000	0.000	0.000
28.Dec.16	0.000	0.000	0.000	0.000	0.000	0.000	0.000	0.000	0.000	0.000	0.000	0.018	0.018
29.Dec.16	0.000	0.000	0.000	0.000	0.000	0.000	0.000	0.000	0.000	0.000	0.000	0.000	0.000
30.Dec.16	0.000	0.000	0.000	0.000	0.000	0.000	0.000	0.000	0.000	0.000	0.000	0.000	0.000
31.Dec.16	0.000	0.000	0.000	0.000	0.000	0.000	0.000	0.000	0.000	0.000	0.000	0.000	0.000
TOTAL	0.000	0.000	0.000	0.000	0.000	0.000	0.000	0.000	0.000	0.000	0.000	0.067	0.067

Date	DUE TO T&D CONSTRAINTS IN DELHI SYSTEM								
	DTL					DISCOMS			
	BSES		NDPL	NDMC	MES	BSES		NDPL	NDMC
	BYPL	BRPL				BYPL	BRPL		
26	27	28	29	30	31	32	33	34	
01.Dec.16	0.000	0.000	0.006	0.000	0.000	0.000	0.016	0.000	0.000
02.Dec.16	0.000	0.000	0.005	0.000	0.000	0.000	0.000	0.000	0.000
03.Dec.16	0.000	0.000	0.000	0.000	0.000	0.007	0.022	0.000	0.000
04.Dec.16	0.000	0.000	0.000	0.000	0.000	0.000	0.000	0.006	0.000
05.Dec.16	0.000	0.007	0.000	0.000	0.000	0.000	0.005	0.000	0.000
06.Dec.16	0.000	0.000	0.000	0.000	0.000	0.000	0.032	0.000	0.000
07.Dec.16	0.000	0.018	0.005	0.004	0.000	0.000	0.015	0.003	0.000
08.Dec.16	0.000	0.000	0.002	0.000	0.000	0.004	0.005	0.001	0.000
09.Dec.16	0.010	0.000	0.000	0.000	0.000	0.006	0.003	0.000	0.000
10.Dec.16	0.008	0.018	0.000	0.000	0.000	0.000	0.000	0.000	0.000
11.Dec.16	0.000	0.000	0.143	0.000	0.000	0.000	0.001	0.000	0.000
12.Dec.16	0.000	0.000	0.000	0.000	0.000	0.000	0.000	0.000	0.000
13.Dec.16	0.000	0.000	0.000	0.000	0.000	0.009	0.012	0.000	0.000
14.Dec.16	0.000	0.000	0.000	0.000	0.000	0.000	0.000	0.002	0.000
15.Dec.16	0.000	0.000	0.000	0.000	0.000	0.001	0.000	0.008	0.000
16.Dec.16	0.000	0.000	0.000	0.000	0.000	0.000	0.000	0.000	0.000
17.Dec.16	0.000	0.000	0.000	0.000	0.000	0.000	0.001	0.000	0.000
18.Dec.16	0.000	0.000	0.000	0.000	0.000	0.000	0.000	0.000	0.000
19.Dec.16	0.000	0.000	0.000	0.000	0.000	0.000	0.020	0.004	0.000
20.Dec.16	0.000	0.000	0.000	0.000	0.000	0.011	0.000	0.000	0.000
21.Dec.16	0.000	0.000	0.079	0.000	0.000	0.007	0.002	0.000	0.000
22.Dec.16	0.000	0.000	0.000	0.000	0.000	0.000	0.000	0.000	0.000
23.Dec.16	0.000	0.000	0.016	0.000	0.000	0.000	0.003	0.000	0.000
24.Dec.16	0.000	0.000	0.000	0.000	0.000	0.000	0.032	0.002	0.000
25.Dec.16	0.000	0.000	0.000	0.000	0.000	0.000	0.000	0.000	0.000
26.Dec.16	0.000	0.000	0.000	0.000	0.000	0.000	0.003	0.001	0.000
27.Dec.16	0.000	0.000	0.009	0.000	0.000	0.005	0.012	0.002	0.000
28.Dec.16	0.000	0.000	0.000	0.000	0.000	0.000	0.000	0.000	0.000
29.Dec.16	0.000	0.000	0.000	0.000	0.000	0.000	0.011	0.000	0.000
30.Dec.16	0.036	0.000	0.006	0.000	0.000	0.000	0.000	0.001	0.000
31.Dec.16	0.003	0.004	0.001	0.000	0.000	0.000	0.006	0.007	0.000
TOTAL	0.057	0.047	0.272	0.004	0.000	0.050	0.201	0.037	0.000

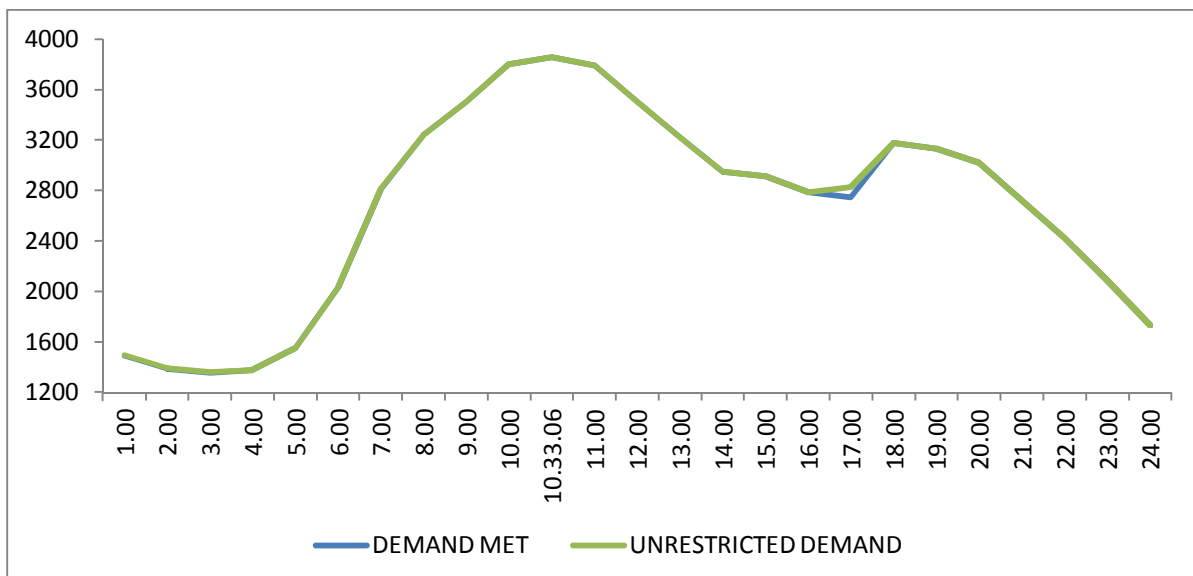
DATE	OTHER AGENCIES LIKE GENCO, BBMB, BTPS ETC.				THEFT PRONE SHEDDING			TOTAL SHEDDING DUE TO T&D CONSTS. & THEFT PRONE	GRAND TOTAL
	BSES		NDPL	NDMC	BSES		NDPL		
	BYPL	BRPL			BYPL	BRPL			
1	35	36	37	38	39	40	41	42= 26 to 41	43 = 25 + 42
01.Dec.16	0.000	0.000	0.000	0.000	0.000	0.000	0.013	0.035	0.035
02.Dec.16	0.000	0.000	0.000	0.000	0.000	0.000	0.021	0.026	0.046
03.Dec.16	0.000	0.000	0.000	0.000	0.000	0.000	0.000	0.029	0.029
04.Dec.16	0.000	0.000	0.000	0.000	0.000	0.000	0.015	0.021	0.021
05.Dec.16	0.000	0.000	0.000	0.000	0.000	0.000	0.000	0.012	0.012
06.Dec.16	0.000	0.000	0.000	0.000	0.000	0.000	0.000	0.032	0.032
07.Dec.16	0.000	0.011	0.003	0.000	0.000	0.000	0.000	0.059	0.059
08.Dec.16	0.000	0.000	0.000	0.000	0.000	0.000	0.000	0.012	0.012
09.Dec.16	0.000	0.000	0.000	0.000	0.000	0.000	0.008	0.027	0.027
10.Dec.16	0.000	0.000	0.000	0.000	0.000	0.000	0.004	0.030	0.030
11.Dec.16	0.000	0.000	0.000	0.000	0.000	0.000	0.006	0.150	0.150
12.Dec.16	0.000	0.000	0.000	0.000	0.000	0.000	0.000	0.000	0.014
13.Dec.16	0.000	0.000	0.000	0.000	0.000	0.000	0.012	0.033	0.033
14.Dec.16	0.000	0.000	0.000	0.000	0.000	0.000	0.008	0.010	0.010
15.Dec.16	0.000	0.000	0.000	0.000	0.000	0.000	0.008	0.017	0.017
16.Dec.16	0.000	0.000	0.000	0.000	0.000	0.000	0.000	0.000	0.000
17.Dec.16	0.000	0.000	0.000	0.000	0.000	0.000	0.003	0.004	0.004
18.Dec.16	0.000	0.000	0.000	0.000	0.000	0.000	0.005	0.005	0.005
19.Dec.16	0.000	0.000	0.000	0.000	0.000	0.000	0.007	0.031	0.031
20.Dec.16	0.000	0.000	0.000	0.000	0.000	0.000	0.015	0.026	0.041
21.Dec.16	0.000	0.000	0.000	0.000	0.000	0.000	0.000	0.088	0.088
22.Dec.16	0.000	0.000	0.000	0.000	0.000	0.000	0.007	0.007	0.007
23.Dec.16	0.000	0.000	0.000	0.000	0.000	0.000	0.014	0.033	0.033
24.Dec.16	0.000	0.000	0.000	0.000	0.000	0.000	0.000	0.034	0.034
25.Dec.16	0.000	0.000	0.000	0.000	0.000	0.000	0.000	0.000	0.000
26.Dec.16	0.000	0.000	0.000	0.000	0.000	0.000	0.007	0.011	0.011
27.Dec.16	0.000	0.000	0.000	0.000	0.000	0.000	0.007	0.035	0.035
28.Dec.16	0.000	0.000	0.000	0.000	0.000	0.000	0.017	0.017	0.035
29.Dec.16	0.000	0.000	0.000	0.000	0.000	0.000	0.008	0.019	0.019
30.Dec.16	0.000	0.000	0.000	0.000	0.000	0.000	0.007	0.050	0.050
31.Dec.16	0.000	0.000	0.000	0.000	0.000	0.000	0.008	0.029	0.029
TOTAL	0.000	0.011	0.003	0.000	0.000	0.000	0.200	0.882	0.949

DATE	(NET CONS.)	MAXI. DEMAND MET DURING THE DAY	TIME OF OCCURRENCE OF MAX DEMAND	SHEDDING AT THIS TIME	UN-RESTRICTED DEMAND	MAXIMUM UN-RESTRICTED DEMAND DURING THE DAY	TIME OF MAX. UN-REST. DEMAND	DEMAND AT THAT TIME	SHEDDING AT THAT TIME
	In Mus.	IN MW	IN HRS.	IN MW	IN MW	IN MW	HRS.	IN MW	IN MW
1	32	33	34	35	36=33+35	37=39+40	38	39	40
01.Dec.16	56.083	3204	19:12:18	0	3204	3204	19:12:18	3204	0
02.Dec.16	57.498	3319	10:47:10	0	3319	3319	10:47:10	3319	0
03.Dec.16	54.920	3022	10:00	0	3022	3022	10:00	3022	0
04.Dec.16	52.586	3092	11:06:37	0	3092	3092	11:06:37	3092	0
05.Dec.16	55.664	3054	11:00:49	0	3054	3054	11:00:49	3054	0
06.Dec.16	57.902	3132	10:00:55	0	3132	3132	10:00:55	3132	0
07.Dec.16	57.535	3270	10:14:05	0	3270	3270	10:14:05	3270	0
08.Dec.16	57.459	3252	09:57:09	0	3252	3252	09:57:09	3252	0
09.Dec.16	58.733	3404	10:02:55	0	3404	3404	10:02:55	3404	0
10.Dec.16	55.152	3182	10:20:05	0	3182	3182	10:20:05	3182	0
11.Dec.16	51.869	3214	10:48:19	0	3214	3214	10:48:19	3214	0
12.Dec.16	53.694	3393	10:03:09	0	3393	3393	10:03:09	3393	0
13.Dec.16	57.320	3263	10:14:58	6	3269	3269	10:14:58	3263	6
14.Dec.16	57.924	3296	10:23:21	0	3296	3296	10:23:21	3296	0
15.Dec.16	57.382	3271	10:43:08	0	3271	3271	10:43:08	3271	0
16.Dec.16	59.111	3494	10:18:46	0	3494	3494	10:18:46	3494	0
17.Dec.16	56.943	3308	09:53:44	0	3308	3308	09:53:44	3308	0
18.Dec.16	53.952	3353	10:30	0	3353	3353	10:30	3353	0
19.Dec.16	58.638	3391	09:50:23	0	3391	3391	09:50:23	3391	0
20.Dec.16	59.686	3427	09:48:06	0	3427	3427	09:48:06	3427	0
21.Dec.16	58.892	3543	10:57:22	7	3550	3681	11:00	3357	324
22.Dec.16	59.941	3348	10:16:33	0	3348	3348	10:16:33	3348	0
23.Dec.16	62.819	3760	10:28:11	0	3760	3760	10:28:11	3760	0
24.Dec.16	57.744	3338	10:12:29	0	3338	3338	10:12:29	3338	0
25.Dec.16	57.451	3458	11:07:25	0	3458	3458	11:07:25	3458	0
26.Dec.16	60.077	3563	10:16	0	3563	3563	10:16	3563	0
27.Dec.16	60.738	3563	10:19:47	4	3567	3567	10:19:47	3563	4
28.Dec.16	60.978	3637	10:20	0	3637	3637	10:20	3637	0
29.Dec.16	61.273	3579	10:42:20	0	3579	3579	10:42:20	3579	0
30.Dec.16	63.033	3857	10:33:06	0	3857	3857	10:33:06	3857	0
31.Dec.16	57.504	3557	10:21	0	3557	3557	10:21	3557	0
TOTAL	1790.501	3857	10:33:06	0	3857	3857	10:33:06	3857	0
		30.12.16			30.12.16				

LOAD PATTERN OF DELHI ON THE DAY OF PEAK DEMAND MET DURING DECEMBER 2016 ON 30.12.2016- 3857MW AT 10.33.06HRS.

All figures in MW

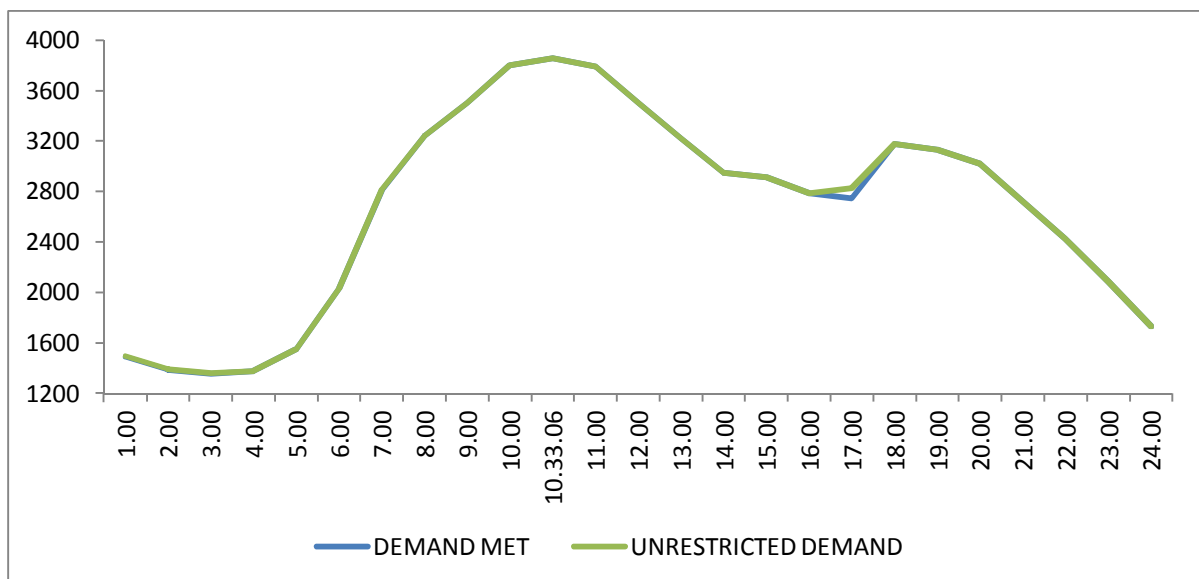
Hrs.	Demand	Load Shedding	Un-Restricted Demand
1.00	1493	5	1498
2.00	1387	5	1392
3.00	1357	5	1362
4.00	1377	0	1377
5.00	1550	0	1550
6.00	2030	0	2030
7.00	2810	7	2817
8.00	3241	0	3241
9.00	3501	0	3501
10.00	3801	0	3801
10.33.06	3857	0	3857
11.00	3790	0	3790
12.00	3501	0	3501
13.00	3223	0	3223
14.00	2948	0	2948
15.00	2915	0	2915
16.00	2786	0	2786
17.00	2746	82	2828
18.00	3176	0	3176
19.00	3132	0	3132
20.00	3020	0	3020
21.00	2722	0	2722
22.00	2427	0	2427
23.00	2089	0	2089
24.00	1734	0	1734
Total (IN MUS)	63.033	0.050	63.083



11 LOAD PATTERN OF DELHI ON THE DAY OF MAXIMUM UN-RESTRICTED DEMAND DURING DECEMBER 2016 ON 30.12.2016-3857MW AT 10.33.06HRS.

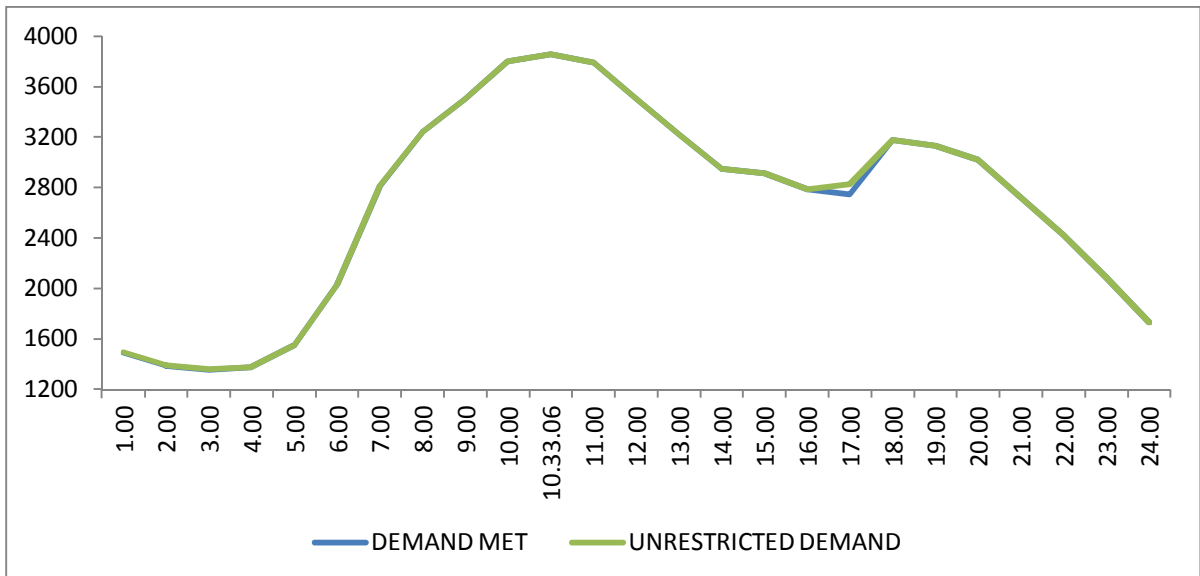
All figures in MW

Hrs.	Demand	Load Shedding	Un-Restricted Demand
1.00	1493	5	1498
2.00	1387	5	1392
3.00	1357	5	1362
4.00	1377	0	1377
5.00	1550	0	1550
6.00	2030	0	2030
7.00	2810	7	2817
8.00	3241	0	3241
9.00	3501	0	3501
10.00	3801	0	3801
10.33.06	3857	0	3857
11.00	3790	0	3790
12.00	3501	0	3501
13.00	3223	0	3223
14.00	2948	0	2948
15.00	2915	0	2915
16.00	2786	0	2786
17.00	2746	82	2828
18.00	3176	0	3176
19.00	3132	0	3132
20.00	3020	0	3020
21.00	2722	0	2722
22.00	2427	0	2427
23.00	2089	0	2089
24.00	1734	0	1734
Total (IN MUS)	63.033	0.050	63.083



12 LOAD PATTERN OF DELHI ON THE DAY OF MAXIMUM ENERGY CONSUMED DURING DECEMBER 2016 – 30.12.2016 – 63.033Mus All figures in MW

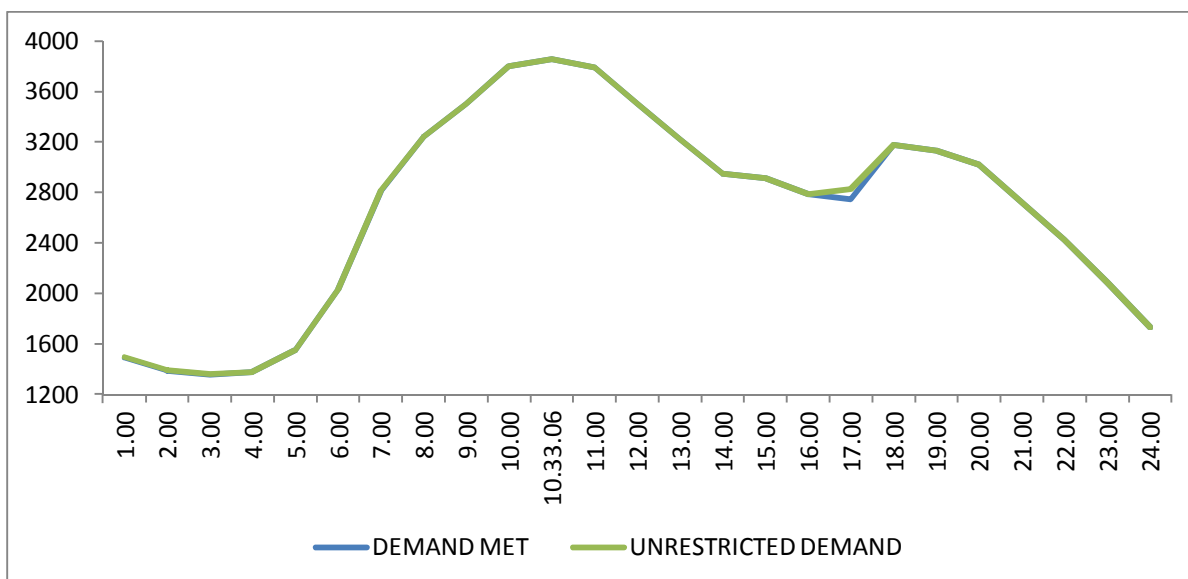
Hrs.	Demand	Load Shedding	Un-Restricted Demand
1.00	1493	5	1498
2.00	1387	5	1392
3.00	1357	5	1362
4.00	1377	0	1377
5.00	1550	0	1550
6.00	2030	0	2030
7.00	2810	7	2817
8.00	3241	0	3241
9.00	3501	0	3501
10.00	3801	0	3801
10.33.06	3857	0	3857
11.00	3790	0	3790
12.00	3501	0	3501
13.00	3223	0	3223
14.00	2948	0	2948
15.00	2915	0	2915
16.00	2786	0	2786
17.00	2746	82	2828
18.00	3176	0	3176
19.00	3132	0	3132
20.00	3020	0	3020
21.00	2722	0	2722
22.00	2427	0	2427
23.00	2089	0	2089
24.00	1734	0	1734
Total (IN MUS)	63.033	0.050	63.083



13 LOAD PATTERN OF DELHI ON THE DAY OF MAXIMUM UNRESTRICTED ENERGY DEMAND DURING DECEMBER 2016 – 30.12.2016 – 63.083Mus

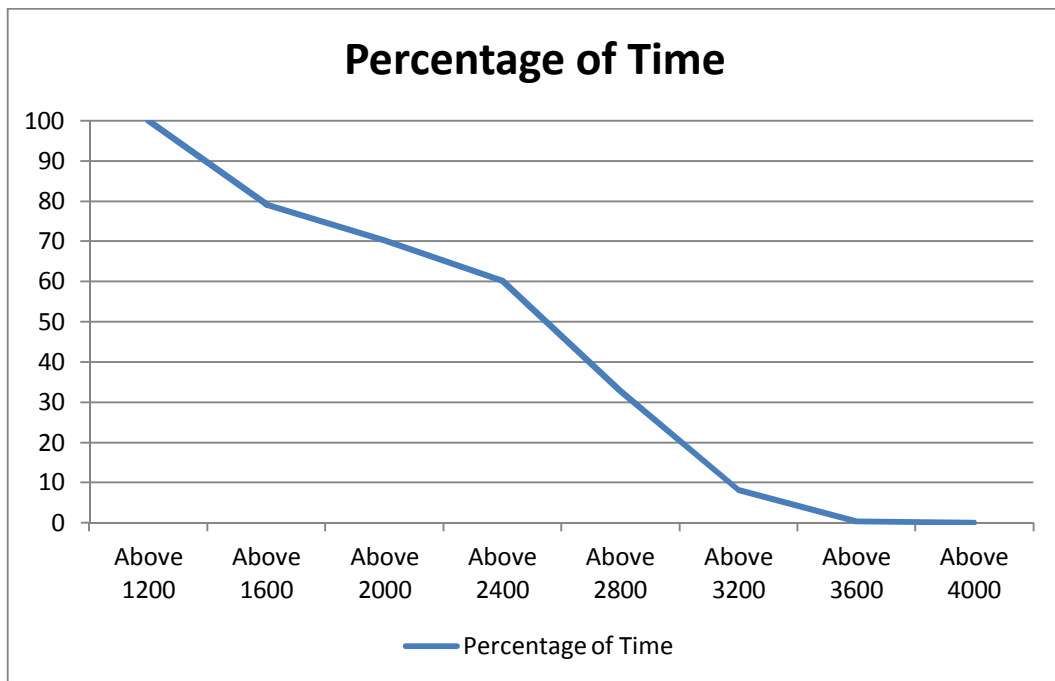
All figures in MW

Hrs.	Demand	Load Shedding	Un-Restricted Demand
1.00	1493	5	1498
2.00	1387	5	1392
3.00	1357	5	1362
4.00	1377	0	1377
5.00	1550	0	1550
6.00	2030	0	2030
7.00	2810	7	2817
8.00	3241	0	3241
9.00	3501	0	3501
10.00	3801	0	3801
10.33.06	3857	0	3857
11.00	3790	0	3790
12.00	3501	0	3501
13.00	3223	0	3223
14.00	2948	0	2948
15.00	2915	0	2915
16.00	2786	0	2786
17.00	2746	82	2828
18.00	3176	0	3176
19.00	3132	0	3132
20.00	3020	0	3020
21.00	2722	0	2722
22.00	2427	0	2427
23.00	2089	0	2089
24.00	1734	0	1734
Total (IN MUS)	63.033	0.050	63.083



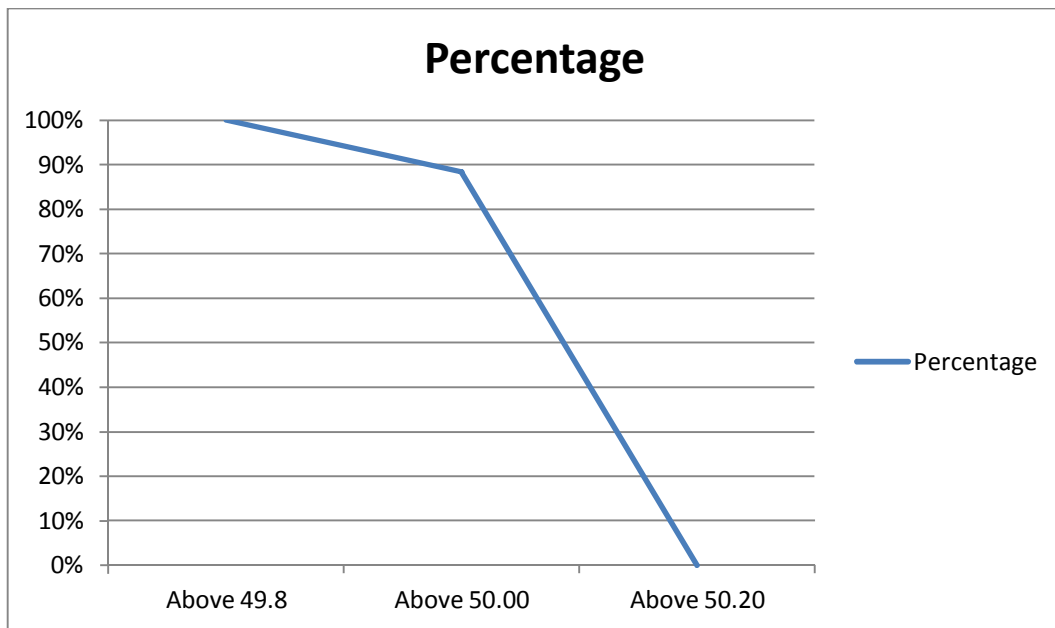
14 **LOAD DURATION CURVE FOR DECEMBER 2016**

Load in MW	Percentage of Time
Above 1200	100.00
Above 1600	79.17
Above 2000	70.23
Above 2400	60.18
Above 2800	32.86
Above 3200	8.13
Above 3600	0.34
Above 4000	0.00



FREQUENCY ANALYSIS FOR THE MONTH OF DECEMBER 2016

Frequency Range in Hz.	Percentage of time
Above 49.8	100
Above 50.00	84.51
Above 50.20	0.27



16 VOLTAGE PROFILE OF 220 KV SUB-STATIONS IN DELHI DURING DECEMBER 2016

All figures in kV

Date	NARELA		GAZIPUR	
	Max	Min	Max	Min
01.Dec.16	234.98	220.53	226.72	206.99
02.Dec.16	235.23	217.70	226.85	205.06
03.Dec.16	234.46	220.27	226.85	210.60
04.Dec.16	234.33	222.85	224.92	212.79
05.Dec.16	234.46	220.92	224.40	209.44
06.Dec.16	234.07	219.11	226.72	209.96
07.Dec.16	233.69	219.50	228.27	208.02
08.Dec.16	233.95	219.50	226.34	210.60
09.Dec.16	232.40	219.63	226.72	206.99
10.Dec.16	235.11	219.89	225.43	207.38
11.Dec.16	236.40	222.34	227.63	213.31
12.Dec.16	235.75	221.18	232.01	210.86
13.Dec.16	234.59	220.15	226.72	212.41
14.Dec.16	234.07	218.21	226.72	209.96
15.Dec.16	233.82	218.86	226.59	211.12
16.Dec.16	234.72	217.70	225.05	210.86
17.Dec.16	234.46	220.15	227.63	211.50
18.Dec.16	234.33	219.50	223.30	--
19.Dec.16	234.59	218.98	235.75	--
20.Dec.16	234.72	218.47	233.04	208.80
21.Dec.16	234.98	218.34	232.78	213.70
22.Dec.16	230.21	220.16	229.17	--
23.Dec.16	233.95	219.76	232.40	--
24.Dec.16	235.23	218.21	230.21	--
25.Dec.16	234.59	220.79	231.24	--
26.Dec.16	235.62	220.40	233.04	--
27.Dec.16	235.23	219.89	236.65	208.80
28.Dec.16	234.98	218.60	237.69	206.73
29.Dec.16	233.83	221.44	235.75	--
30.Dec.16	235.11	218.98	237.17	--
31.Dec.16	234.72	218.21	237.30	217.31

17 VOLTAGE PROFILE OF 400 KV SUB-STATIONS IN DELHI DURING DECEMBER 2016

All figures in kV

Date	400kV Bamnauli Grid Sub-Station				
	Max KV	Max Time	Min KV	Min Time	Average KV
01.Dec.16	420.67	00.28.11	420.67	00.28	420.67
02.Dec.16	420.67	00.29.41	400.97	16.50	415.40
03.Dec.16	420.43	02.01.50	393.94	09.50	408.14
04.Dec.16	422.08	02.51.43	399.33	12.08	413.04
05.Dec.16	423.01	00.13.36	397.45	12.15	409.94
06.Dec.16	422.55	02.06.45	395.11	09.51	407.80
07.Dec.16	422.55	04.00.13	395.58	09.38	407.60
08.Dec.16	421.61	02.02.08	395.81	15.51	407.94
09.Dec.16	421.37	02.01.32	393.70	11.21	407.35
10.Dec.16	422.55	02.33.26	391.36	10.14	408.02
11.Dec.16	423.72	03.59.52	401.68	11.08	413.09
12.Dec.16	427.70	03.59.36	398.16	11.41	411.14
13.Dec.16	421.84	03.02.01	398.39	11.20	409.01
14.Dec.16	423.01	03.02.05	393.70	12.43	407.09
15.Dec.16	421.84	02.01.10	392.30	11.40	407.72
16.Dec.16	422.78	02.22.54	391.59	10.10	407.51
17.Dec.16	422.08	02.02.49	394.64	11.18	408.96
18.Dec.16	421.61	02.56.23	396.28	11.18	410.39
19.Dec.16	422.78	04.00.26	393.23	11.19	406.55
20.Dec.16	420.20	04.03.02	393.70	10.09	407.40
21.Dec.16	418.09	04.01.47	393.47	11.15	406.87
22.Dec.16	419.73	02.02.41	396.05	10.08	407.39
23.Dec.16	419.50	04.02.36	395.58	06.53	406.53
24.Dec.16	419.50	04.02.21	392.30	11.48	406.28
25.Dec.16	418.56	04.00.00	400.27	11.10	410.61
26.Dec.16	419.26	21.58.00	398.16	11.18	409.27
27.Dec.16	421.84	04.02.00	399.80	09.40	410.20
28.Dec.16	422.08	04.01.01	398.63	09.41	409.94
29.Dec.16	419.50	21.00.00	401.44	09.40	410.06
30.Dec.16	420.67	04.00.00	397.45	12.21	410.49
31.Dec.16	422.08	00.26.00	393.94	09.08	409.99

Date	400kV Bawana Grid Sub-Station				
	Max KV	Max Time	Min KV	Min Time	Average KV
01.Dec.16	427.94	02.03.39	400.97	15.12	415.81
02.Dec.16	428.64	04.02.48	400.97	12.11	415.39
03.Dec.16	426.33	02.01.04	405.19	15.18	416.39
04.Dec.16	427.70	23.56.49	415.98	11.18	420.80
05.Dec.16	428.88	00.15.12	406.37	15.11	417.22
06.Dec.16	427.94	02.01.57	402.14	15.18	418.41
07.Dec.16	427.70	00.56.50	405.19	11.06	416.44
08.Dec.16	428.41	01.59.43	403.32	15.47	415.02
09.Dec.16	428.41	02.02.15	402.14	11.22	416.63
10.Dec.16	429.11	02.34.53	404.49	10.08	420.97
11.Dec.16	431.46	04.00.43	410.82	11.39	418.25
12.Dec.16	431.22	02.02.48	407.54	15.29	417.44
13.Dec.16	429.11	03.03.21	406.37	15.27	415.22
14.Dec.16	428.64	03.01.04	401.68	12.41	416.18
15.Dec.16	428.88	02.00.50	401.91	11.39	415.84
16.Dec.16	430.28	02.23.42	401.91	11.38	417.40
17.Dec.16	429.11	02.03.23	406.60	11.20	418.35
18.Dec.16	428.64	02.02.50	405.66	11.15	415.54
19.Dec.16	429.11	04.01.25	404.02	11.19	413.14
20.Dec.16	429.11	03.02.39	408.48	06.26	409.18
21.Dec.16	409.18	00.58.26	409.18	00.58	409.18
22.Dec.16	409.18	00.02.13	409.18	00.02	409.18
23.Dec.16	409.18	00.01.23	409.18	00.01	409.18
24.Dec.16	409.18	00.02.53	409.18	00.02	409.18
25.Dec.16	409.18	00.04.00	409.18	00.04	409.18
26.Dec.16	409.18	00.05.00	409.18	00.05	409.18
27.Dec.16	420.43	21.01.00	--	13.09	409.64
28.Dec.16	424.42	04.00.00	404.02	11.15	413.77
29.Dec.16	423.01	02.58.00	407.54	09.44	414.65
30.Dec.16	425.36	03.49.00	401.91	12.21	414.86
31.Dec.16	426.53	01.03.00	401.44	09.51	414.24

18 DETAILS OF LUMPED CAPACITORS AT NEAREST 220 KV SUBSTATION

Sl. No	SUB-STATION	INSTALLED CAPACITY			
		66KV	33kV	11kV	TOTAL
1	IP YARD		30.00		30.00
1	Kamla Market			16.35	16.35
2	Minto Road				0.00
3	GB Pant Hosp			10.48	10.48
4	Delhi Gate			16.30	16.30
5	Tilakmarg			5.04	5.04
7	Cannaught Place			10.08	10.08
8	Kilokri		10.08	10.48	20.56
9	NDSE-II				0.00
11	Nizamuddin				0.00
12	Exhibition-I				0.00
13	Exhibition-II				0.00
14	Defence Colony				0.00
15	IG Stadium		10.08	5.45	15.53
16	Lajpat Nagar				0.00
17	IP Estate			10.90	10.90
		0.00	50.16	85.08	135.24
2	Electric Lane				
1	Electric Lane			5.04	5.04
2	Scindia House			10.44	10.44
3	Mandi House			10.80	10.80
4	Raisina Road			10.08	10.08
5	Raja Bazar			10.08	10.08
		0.00	0.00	46.44	46.44
3	RPH Station		20.00		20.00
1	Lahori Gate			10.49	10.49
2	Jama Masjid			10.48	10.48
4	Kamla Market				0.00
5	Minto Road			10.90	10.90
6	GB Pant Hosp				0.00
7	IG Stadium				0.00
		0.00	20.00	31.87	51.87
4	Parkstreet S/stn	20.00	20.00		40.00
1	Shastri Park		10.90	5.45	16.35
2	Faiz Road			18.05	18.05
3	Motia Khan			16.30	16.30
4	Prasad Nagar			16.25	16.25
5	Anand Parbat			10.80	10.80
6	Shankar Road			10.44	10.44
7	Rama Road			0.00	0.00
8	Baird Road			10.08	10.08
9	Hanuman Road			10.08	10.08
10	Pusa			5.44	5.44
11	Ridge Valley			0.00	0.00
12	B. D. Marg			5.40	5.40
13	Nirman Bhawan			5.04	5.04
		20.00	30.90	113.33	164.23
5	Naraina S/stn		20.00	5.04	25.04
1	DMS			10.85	10.85
2	Mayapuri		10.87	10.40	21.27
3	Inderpuri		13.26	5.04	18.30
4	Rewari line				0.00
5	Khyber Lane		10.05		10.05
6	Kirbi Place		10.05		10.05
7	Payal			10.08	10.08
8	A-21 Naraina			4.80	4.80
8	Saraswati Garden			10.08	10.08
		0.00	64.23	56.29	120.52

Sl. No	SUB-STATION	INSTALLED CAPACITY			
		66KV	33kV	11kV	TOTAL
6	Mehrauli S/stn	80.00		5.04	85.04
1	Adchini			14.61	14.61
2	Andheria Bagh			10.85	10.85
3	IIT			10.90	10.90
4	JNU		10.03	10.03	20.06
5	Bijwasan			15.47	15.47
6	DC Saket		10.08	9.98	20.06
7	Malviya Nagar				0.00
8	C Dot			10.48	10.48
9	Vasant kunj B-Blk	21.79		10.90	32.69
10	Vasant kunj C-Blk	20.16		10.48	30.64
11	Palam				0.00
12	IGNOU			5.04	5.04
13	R. K. Puram-I			10.07	10.07
14	Vasant Vihar			19.25	19.25
15	Pusp Vihar			10.44	10.44
16	Bhikaji Cama Place		10.08	10.07	20.15
		121.95	30.19	163.61	315.75
7	Vasantkunj S/stn	40.00		5.04	45.04
1	R. K. Puram-II			10.80	10.80
2	Vasant kunj C-Blk				0.00
3	Vasant kunj D-Blk			9.63	9.63
4	Ridge Valley				0.00
		40.00	0.00	25.47	65.47
8	Okhla S/stn	60.00	10.00	5.04	75.04
1	Balaji			10.80	10.80
2	East of Kailash			15.89	15.89
3	Alaknanda			16.30	16.30
4	Malviya Nagar	21.79	20.16	10.85	52.80
5	Masjid Moth			16.30	16.30
6	Nehru Place			21.34	21.34
7	Okhla Ph-I	21.79		16.30	38.09
8	Okhla Ph-II		20.93	15.47	36.40
9	Shivalik			10.80	10.80
10	Batra			15.90	15.90
11	VSNL			10.90	10.90
12	Siri Fort			10.49	10.49
13	Tuglakabad			10.85	10.85
		103.58	51.09	187.23	341.90
9	Lodhi Road S/stn			20.00	20.00
1	Defence Colony			14.85	14.85
2	Hudco			10.90	10.90
3	Lajpat Nagar			10.90	10.90
4	Nizamuddin			10.44	10.44
5	Vidyut Bhawan (Shahjahan Rd)			10.80	10.80
6	Ex. Gr. II			0.00	0.00
7	IHC			0.00	0.00
		0.00	0.00	77.89	77.89
10	Sarita Vihar S/stn	20.00		5.04	25.04
1	Sarita Vihar			10.07	10.07
2	MCIE			10.06	10.06
3	Mathura Road	20.16		11.69	31.85
4	Jamia Millia			10.89	10.89
5	Sarai Julena		10.08	16.29	26.37
6	Jasola			5.44	5.44
		40.16	10.08	69.48	119.72

Sl. No	SUB-STATION	INSTALLED CAPACITY			
		66KV	33kV	11kV	TOTAL
11	Wazirabad				
1	Bhagirathi		14.40	18.10	32.50
2	Ghonda	21.79	22.56	15.94	60.29
3	Seelam Pur		10.08	21.39	31.47
4	Dwarkapuri			15.46	15.46
5	Nandnagri	20.16		16.35	36.51
6	Yamuna Vihar			14.40	14.40
7	East of Loni Road			18.00	18.00
8	Shastri Park			10.90	10.90
9	Karawal Nagar			5.40	5.40
10	Sonia Vihar			14.70	14.70
		41.95	47.04	150.64	239.63
12	Geeta Colony				
1	Geeta Colony			10.49	10.49
2	Kanti Nagar			18.10	18.10
3	Kailash Nagar			15.48	15.48
4	Seelam Pur				0.00
5	Shakar Pur			10.80	10.80
		0.00	0.00	54.87	54.87
13	Gazipur S/stn	40.00		5.04	45.04
1	Dallupura	28.80		10.90	39.70
2	Vivek Vihar			9.57	9.57
3	GT Road			10.85	10.85
4	Kondli	20.16		10.85	31.01
5	MVR-I			10.90	10.90
6	MVR-II	20.16		10.44	30.60
7	PPG Ind. Area			10.06	10.06
		109.12	0.00	78.61	187.73
14	Patparganj S/stn	40.00	20.00	5.04	65.04
1	GH-I	19.89		10.45	30.34
2	GH-II	20.09		10.90	30.99
3	CBD		10.03	15.48	25.51
4	Guru Angad Nagar			15.49	15.49
5	Karkadooma		10.80	10.44	21.24
6	Preet Vihar			10.07	10.07
7	CBD-II			10.80	10.80
8	Shakarpur				0.00
9	Jhilmil			10.80	10.80
10	Dilshad Garden	20.16		16.35	36.51
11	Khichripur	21.79		15.89	37.68
12	Mother Dairy				0.00
13	Scope Building				0.00
14	Vivek Vihar				0.00
15	Akhardham			14.60	14.60
		121.93	40.83	146.31	309.07
15	Najafgarh S/stn	60.00		5.04	65.04
1	A4 Paschim Vihar			10.80	10.80
2	Nangloi	21.73		15.84	37.57
3	Nangloi W/W	20.89		10.85	31.74
4	Pankha Road			15.88	15.88
5	Jaffarpur			15.43	15.43
7	Inst. Area Janakpuri (Sagarpur)			17.60	17.60
8	Paschimpuri		10.05	15.47	25.52
9	Paschim Vihar	41.83		15.43	57.26
10	Mukherjee Park			20.83	20.83
11	Udyog Nagar			10.43	10.43
12	Choukhandi			10.07	10.07
13	DJB Najafgarh			21.60	21.60
		144.45	10.05	185.27	339.77

Sl. No	SUB-STATION	INSTALLED CAPACITY			
		66KV	33kV	11kV	TOTAL
16	Pappankalan-I S/stn	20.00		5.04	25.04
1	Bindapur Grid G-3 PPK	21.73		15.85	37.58
2	Bodella-I	20.10		16.24	36.34
3	Bodella-II	21.73		17.64	39.37
4	DC Janakpuri			10.03	10.03
5	G-2 PPK (Nasirpur)			10.80	10.80
6	G-5 PPK (Matiala)			15.51	15.51
7	G-6 PPK			5.40	5.40
8	G-15 PPK			10.80	10.80
9	Harinagar	21.18		16.25	37.43
10	Rewari line			5.44	5.44
		104.74	0.00	129.00	233.74
17	BBMB Rohtak Road				
1	S.B. Mill			10.07	10.07
2	Rama Road			10.88	10.88
3	Ram Pura			10.48	10.48
4	Rohtak Road			10.08	10.08
5	Vishal			10.40	10.40
6	Madipur			10.43	10.43
7	Sudershan Park			10.08	10.08
8	Kirti Nagar			5.44	5.44
		0.00	0.00	77.86	77.86
18	Shalimarbagh S/stn		40.00	6.00	46.00
1	S.G.T. Nagar			5.44	5.44
2	Ashok Vihar			0.00	0.00
3	Haiderpur			11.39	11.39
4	SMB FC			12.64	12.64
5	Rani Bagh			5.44	5.44
6	SMB KHOSLA			5.44	5.44
		0.00	40.00	46.35	86.35
19	Subzimandi S/stn			6.00	6.00
1	Shakti Nagar			5.04	5.04
2	Gulabibagh			10.88	10.88
3	Shahzadabagh			15.79	15.79
4	DU			5.44	5.44
5	Tripolia			10.88	10.88
6	B. G. Road			5.40	5.40
		0.00	0.00	59.43	59.43
20	Narela S/stn	40.00		5.04	45.04
1	A-7 Narela			10.88	10.88
2	Azad Pur			5.44	5.44
3	Badli	20.00		5.95	25.95
4	DSIDC Narela-1			5.95	5.95
5	GTK			5.94	5.94
6	Jahangirpuri	20.00	10.00	0.00	30.00
7	Bhalswa			12.64	12.64
8	Pitampura-I	20.00		5.04	25.04
9	RG-1			5.44	5.44
		100.00	10.00	62.32	172.32

Sl. No	SUB-STATION	INSTALLED CAPACITY			
		66KV	33kV	11kV	TOTAL
21	Gopalpur S/stn		30.00	5.04	35.04
1	Hudson Lane			5.95	5.95
2	Wazirabad			7.20	7.20
3	Indra Vihar			5.95	5.95
4	DIFR			5.44	5.44
5	GTK Road			5.44	5.44
6	Jahangirpuri		10.00	5.95	15.95
7	Civil lines			7.20	7.20
8	Pitam Pura-3			5.44	5.44
9	SGT Nagar			5.95	5.95
10	Tiggipur			10.88	10.88
11	Model Town			14.40	14.40
12	Azad Pur			5.44	5.44
		0.00	40.00	90.28	130.28
22	Rohini S/stn	40.00		6.00	46.00
1	Rohini Sec-22			18.08	18.08
2	Rohini Sec-24			5.44	5.44
3	Rohini-3			5.95	5.95
4	Rohini-4			11.39	11.39
5	Rohini-5			11.39	11.39
6	Rohini-6			0.00	0.00
7	Mangolpuri-2	20.00		7.20	27.20
8	Pitam Pura-1			5.44	5.44
9	Pitam Pura-2			10.48	10.48
10	Rohini DC-1			14.40	14.40
11	AIR Kham pur			11.90	11.90
		60.00	0.00	107.67	167.67
23	Kanjhawala S/stn	20.00		5.04	25.04
1	Bawana Clear Water			14.30	14.30
2	Pooth Khoord	20.00		5.44	25.44
4	Rohini -2			13.15	13.15
		40.00	0.00	37.93	77.93
24	BAWANA S/stn				
1	Bawana S/stn No. 6			10.88	10.88
2	Bawana S/stn No. 7			7.20	7.20
		0.00	0.00	18.08	18.08
25	Kashmeregate S/stn			5.04	5.04
1	Civil lines			7.20	7.20
2	Town Hall			8.64	8.64
3	Fountain			5.45	5.45
		0.00	0.00	26.33	26.33
26	Pappankalan-II				
1	DMRC				0.00
2	HASTAL			21.60	21.60
3	GGSH			10.80	10.80
		0.00	0.00	32.40	32.40
27	Trauma Center (AIIMS)				
1	AIIMS		13.26	5.04	18.30
2	Trauma Center			10.08	10.08
3	Netaji Nagar			15.12	15.12
4	Sanjay Camp			10.08	10.08
5	Kidwai Nagar			10.08	10.08
6	SJ Airport			5.04	5.04
7	Race Course			10.44	10.44
		0.00	13.26	65.88	79.14

Sl. No	SUB-STATION	INSTALLED CAPACITY			
		66KV	33kV	11kV	TOTAL
28	MUNDKA				
1	Mangolpuri-I			20.35	20.35
2	Rohini Sec-23	20.00		12.64	32.64
3	66kV Mundka			21.60	21.60
		20.00	0.00	54.59	74.59
29	DSIDC BAWANA				
1	DSIDC NRL-1	20.00			20.00
2	DSIDC NRL-2			16.32	16.32
3	Bawana Clear Water			7.30	7.30
4	Bawana-1			14.40	14.40
		20.00	0.00	38.02	58.02
30	RIDGE VALLEY				
1	Keventry Diary			10.08	10.08
2	Nehru Park			5.04	5.04
3	State Guest House			5.40	5.40
4	Bapu Dham			15.48	15.48
		0.00	0.00	36.00	36.00
31	IP EXTN (PRAGATI)				
1	Vidyut Bhawan			10.08	10.08
2	Dalhousie Road			5.04	5.04
3	National Archives			10.08	10.08
4	School Lane			10.44	10.44
		0.00	0.00	35.64	35.64
32	Wazirpur				
1	Tri Nagar			10.88	10.88
2	Wazirpur-1			17.18	17.18
3	Wazirpur-2			13.20	13.20
4	Ashok vihar			17.80	17.80
5	Azad Pur			5.44	5.44
6	GTK			4.80	4.80
		0.00	0.00	69.30	69.30
33	Peeragarhi				
1	Rani Bagh			5.44	5.44
2	Rani Bagh cc			9.60	9.60
		0.00	0.00	15.04	15.04
34	Rohini-II				
1	Rohini-6			13.15	13.15
		0.00	0.00	13.15	13.15

Utility	HT	LT	Total
BYPL	901.18	102.00	1003.18
BRPL	1264.49	242.00	1506.49
TPDDL	820.34	119.00	939.34
NDMC	253.74	24.00	277.74
DTL	753.52	0.00	753.52
IPGCL (RPH)	20.00	0.00	20.00
MES	20.10	0.00	20.10
TOTAL	4033.37	487.00	4520.37

20 DETAILS OF BREAK-DOWNS DURING THE MONTH OF DECEMBER 2016

SL NO	OCCURRENCE OF BREAK-DOWN		DETAILS OF THE BREAKDOWN	TIME OF RESTORATION		REMARKS
	DATE	TIME		DATE	TIME	
1	1.12.16	08:38	GEETA COLONY 220/33kV 100MVA Tx-II	CONTD		TR. TRIPPED ON BUCHOLZ RELAY.
2	1.12.16	05:22	220kV BAWANA - KANJHAWALA CKT - 1	1.12.16	13:02	At Bawana : Ckt. tripped on Dist prot, zone-2, Dist 17.32Kms., 86. At Khanjawala : Ckt. did not trip.
3	1.12.16	05:22	220kV BAWANA - KANJHAWALA CKT-2	1.12.16	13:02	At Bawana : Ckt. tripped on Dist prot, zone-1, Dist 2.47Kms. . At Khanjawala : Ckt. did not trip.
4	1.12.16	07:11	220kV PRAGATI - SARITA VIHAR CKT-II	1.12.16	10:24	At Sarita Vihar : Ckt. tripped on Dist prot, zone-I, Dist 5.912Kms.186AB. At Pragati : Ckt. tripped on Dist prot, Trip phase ABC, 186.
5	1.12.16	07:31	220kV DSIIDC BAWANA-NARELA CKT-II	2.12.16	14:42	At Bawana : Ckt. Master relay, Dist prot, Dist 1.315Kms. At Narela : Ckt. did not trip.
6	1.12.16	08:09	220kV GEETA COLONY- PATPARGANJ CKT-I	1.12.16	09:43	At Patparganj : Ckt. tripped on 186, 186, Dist prot, Zone-I,2,333, Active group -I. At Geeta Colony : Ckt. tripped on Active Group-I, Dist prot, Zone-1,2,3, Dist 56Mts.
7	1.12.16	08:42	220kV BAMNAULI-NARAINA CKT-II	1.12.16	13:40	At Bamnauli Ckt. tripped on Dist prot, Zone-I, Dist 12.47Kms. 186 ABC. At Naraina Ckt. did not trip.
8	1.12.16	08:48	220kV WAZIRABAD-GEETA COLONY CKT-II	1.12.16	09:08	At Geeta Colony Ckt. tripped on Dist prot, Dist 7.17Kms. At Wazirabad ckt. did not trip.
9	2.12.16	03:36	220kV BAWANA - KANJHAWALA CKT - 1	2.12.16	10:40	AT BAWANA CKT. TRIPPED ON DIST PROT, ZONE-I, DIST 2.43KM. CKT DID NOT TRIP AT KHANJAWALA.
10	2.12.16	03:36	220kV BAWANA - KANJHAWALA CKT-2	2.12.16	10:40	AT BAWANA CKT. TRIPPED ON DIST PROT, ZONE-I, DIST 11.5KM. CKT DID NOT TRIP AT KHANJAWALA.
11	2.12.16	07:34	220kV BAMNAULI-NARAINA CKT-I	3.12.16	16:58	AT BAMNAULI CKT. TRIPPED ON 186A&B, DIST PROT, ZONE-II. AT NARAINA CKT. DID NOT TRIPPED.
12	2.12.16	07:51	220kV KANJHAWALA-NAJAFGARH CKT-2	2.12.16	21:07	AT KHANJAWALA CKT. TRIPPED ON DIST PROT, ZONE-I, DIST 18.44KM. AT NAJAFGARH CKT. DID NOT TRIPPED.
13	2.12.16	19:57	KANJHAWALA 220/66kV 100MVA Tx-I	2.12.16	20:19	TR. TRIPPED ON LOW GAS PRESSURE.
14	3.12.16	06:06	220kV MUNDKA-KANJHAWALA CKT	3.12.16	10:22	AT MUNDKA CKT. TRIPPED ON 86. AT KHANJAWALA CKT. TRIPPED ON DIST PROT, ZONE-I.
15	3.12.16	07:03	220kV BAWANA - KANJHAWALA CKT-2	3.12.16	17:40	AT BAWANA CKT. TRIPPED ON DIST PROT, ZONE-I, DIST 2.25KM. AT KHANJAWALA CKT. DID NOT TRIP.
16	3.12.16	13:51	PATPARGANJ 33/11kV, 20MVA Tx	3.12.16	19:05	TR. TRIPPED ON 86.
17	4.12.16	19:37	BAWANA 220/66kV 100MVA Tx	7.12.16	17:24	TR. TRIPPED ON BUCHOLZ.
18	5.12.16	14:15	LODHI RD 220/33kV 100MVA Tx-I	5.12.16	14:23	TR. TRIPPED ON AUTO RELEASE, 86B.
19	5.12.16	14:15	LODHI RD 220/33kV 100MVA Tx-II	5.12.16	14:23	TR. TRIPPED ON AUTO RELEASE, 86B.
20	7.12.16	01:32	220kV DSIIDC BAWANA-NARELA CKT-I	7.12.16	12:10	AT DISDC CKT. TRIPPED ON DIST PROT, DIST 5.13KM, C PHASE. AT NARELA CB WAS IN OFF POSITION.

SL NO	OCCURRENCE OF BREAK-DOWN		DETAILS OF THE BREAKDOWN	TIME OF RESTORATION		REMARKS
	DATE	TIME		DATE	TIME	
21	7.12.16	01:35	220kV GAZIPUR - BTPS CKT	7.12.16	11:35	AT BTPS CKT. TRIPPED ON DIST PROT, ZONE-I, DIST 12.9KM. AT GAZIPUR CB WAS IN OFF POSITION.
22	7.12.16	01:46	220KVBAWANA- ROHINI-2 CKT-II	7.12.16	15:25	AT BAWANA CKT. TRIPPED ON DIST PROT, DIST 5.057KM, E/F, 67N. AT ROHINI -II CKT. TRIPPED ON DIST PROT, ZONE-I.
23	7.12.16	01:46	220kV BAWANA - KANJHAWALA CKT-2	7.12.16	18:11	AT BAWANA CKT. TRIPPED ON DIST PROT, ZONE-I, DIST 2.48KM. AT KHANJAWLA CKT. DID NOT TRIP.
24	7.12.16	03:27	220kV DSIIDC BAWANA-NARELA CKT-II	7.12.16	12:10	AT DSIDC CKT. TRIPPED ON DIST PROT, DIST. 1.35KM. AT NARELA CKT. DID NOT TRIP.
25	7.12.16	03:52	220kV MUNDKA-KANJHAWALA CKT	7.12.16	05:10	AT MUNDKA CKT. TRIPPED ON 86 A&B. AT NARELA CKT. DID NOT TRIP.
26	7.12.16	04:13	220kV NARAINA-RIDGE VALLEY CKT-I	7.12.16	04:38	AT RIDGE CKT. TRIPPED ON 86 &B. AT NARAINA CKT. DID NOT TRIP.
27	7.12.16	04:13	220kV BAMNAULI-NARAINA CKT-II	7.12.16	07:26	AT BAMNAULI CKT. TRIPPED ON DIST PROT, ZONE-I, DIST 13.24KM. AT NARAINA CKT. TRIPPED ON DIST PROT, B PHASE, AUTO RECLOSE LOCKOUT.
28	7.12.16	04:38	220kV BAWANA-DSIIDC BAWANA CKT-II	7.12.16	11:52	AT BAWANA CKT .TRIPPED ON AUTO RECLOSE, LBB, 86 A&B. AT DSIDC CK.T TRIPPED ON DIST PROT, DIST 1.2KM.
29	7.12.16	06:06	220kV MUNDKA-KANJHAWALA CKT	7.12.16	19:06	AT MUNDKA CKT .TRIPPED ON 86A&B. AT KHANJAWALA CKT. DID NOT TRIP.
30	7.12.16	18:50	220kV BAMNAULI-PAPPANKALAN-II CKT-I	7.12.16	00:08	AT PAPANALAN -II CKT. TRIPPED ON DIST PROT, MAIN-I, ZONE-I. AT BAMNAULI CKT TRIPPED ON DIST PROT, ZONE-I, DIST 29.54KM, 186A&B.
31	8.12.16	08:21	SUBZI MANDI 33/11kV, 16MVA Tx-II	8.12.16	13:28	TR. TRIPPED ON DIFFERENTIAL.
32	8.12.16	13:00	220kV SARITA VIHAR - BTPS CKT.-I	8.12.16	13:13	AT SARITA VIHAR CKT. TRIPPED ON 186A&B. AT BTPS CKT. DID NOT TRIP.
33	10.12.16	08:12	220 KV PATPARGANJ - I.P. CKT-II	10.12.16	14:16	AT PATPARGANJ CKT. TRIPPED ON 186, DIST PROT, DIST 2.954KM. AT I.P. CKT. TRIPPED ON DIST PROT, ZONE-I. 186.
34	10.12.16	08:40	220kV SARITA VIHAR - BTPS CKT.-I	10.12.16	08:50	At BTPS : No tripping. At Sarita Vihar : Bus Bar Prot. 96, 186A, 186B.
35	10.12.16	08:40	220kV PRAGATI - SARITA VIHAR CKT-II	10.12.16	08:55	At Pragati : No tripping. At Sarita Vihar : Bus Bar Prot. 96, 186A, 186B.
36	10.12.16	08:40	220kV SARITA VIHAR - BTPS CKT.-II	10.12.16	08:55	At Pragati : No tripping. At Sarita Vihar : Bus Bar Prot. 96, 186A, 186B.
37	10.12.16	08:40	220kV PRAGATI - PARK STREET CKT-II	10.12.16	08:49	AT PARK STREET CKT. TRIPPED ON 86. AT PRAGATI CKT. DID NOT TRIP.
38	10.12.16	08:40	220kV PRAGATI - PARK STREET CKT-I	10.12.16	08:49	AT PARK STREET CKT. TRIPPED ON 86. AT PRAGATI CKT. DID NOT TRIP.
39	10.12.16	08:40	SARITA VIHAR 220/66kV 100MVA Tx-I	10.12.16	09:05	Bus bar protection operated at Sarita Vihar.
40	10.12.16	08:40	PARKSTREET 220/66kV 100MVA Tx-I	10.12.16	08:49	TR. TRIPPED ON OVER FLUX, 86.

SL NO	OCCURRENCE OF BREAK-DOWN		DETAILS OF THE BREAKDOWN	TIME OF RESTORATION		REMARKS
	DATE	TIME		DATE	TIME	
41	10.12.16	08:40	SARITA VIHAR 220/66kV 100MVA Tx-II	10.12.16	09:05	Bus bar protection operated at Sarita Vihar.
42	10.12.16	15:15	220kV PRAGATI - SARITA VIHAR CKT-II	10.12.16	20:22	AT SARITA VIHAR CKT. TRIPPED ON 96, BUS BARPROT, OPERATED. AT PRAGATI CKT. DID NOT TRIPPED.
43	11.12.16	08:37	220KVBAWANA- ROHINI CKT-II	11.12.16	21:48	At Bawana : Dist prot, Zone-I, Y phase, Dist. 1.17Km., E/F, 186 A&B, 195 A&B. At Rohini – I : Supply failed.
44	11.12.16	08:37	BAWANA 400/220kV 315MVA ICT-IV	11.12.16	22:31	ICT tripped on Bucholz Alarm, 86A&B. 220kV I/C IV tripped on 86.
45	11.12.16	08:37	BAWANA 400/220kV 315MVA ICT-III	11.12.16	19:35	ICT tripped on CB auto trip, Trip ckt supervision TC-1, 167, 195, 295 & 86B.
46	11.12.16	08:37	BAWANA 400/220kV 315MVA ICT-V	11.12.16	13:37	220kV I/C V tripped on 86 A&B, LBB Prot.
47	11.12.16	08:37	BAWANA 400/220kV 315MVA ICT-I	CONTD.		ICT main CB 420-52 & Tie CB 421-52 tripped on O/C, E/F, Differential prot., R&Y Phase, OTI trip, WTI/PRV Trip, Bucholz. Alarm operated. 220kV I/C of ICT tripped on CB auto trip, 195AC, 195 BC, 195CC, 295AC, 295 BC, 295CC.
48	11.12.16	17:23	SUBZI MANDI 33/11kV, 16MVA Tx-I	11.12.16	19:42	TR. TRIPPED ON DIFFERENTIAL.
49	12.12.16	01:58	220kV NARAINA-RIDGE VALLEY CKT-I	13.12.16	23:00	AT RIDGE VALLEY CKT. TRIPPED ON 86 A&B.
50	12.12.16	04:00	400kV Ballabgarh-Bamnauli Ckt-II	12.12.16	05:00	AT BAMNAULI CKT. TRIPPED ON 186ABB, RYB PHASE. AT BALLABGARH CKT. DID NOT TRIP.
51	14.12.16	11:17	220kV SHALIMAR BAGH - DMRC CKT	14.12.16	11:29	AT SHALIMAR BAGH CKT. TRIPPED ON LOW GAS PRESSURE. AT DMRC CKT. DID NOT TRIP.
52	14.12.16	17:21	400kV Ballabgarh-Bamnauli Ckt-I	14.12.16	18:24	AT BAMNAULI CKT. TRIPPED ON DIST PROT, ZONE-I,II, III, DIST 36.64KM. 186A&B.
53	15.12.16	16:58	400kV Dadri-Harsh Vihar Ckt-I	15.12.16	16:51	AT HARSH VIHAR CKT. TRIPPED ON DIST PROT, MAIN -I & II, ZONE-I, R PHASE.
54	15.12.16	18:23	220kV DSIIDC BAWANA-NARELA CKT-II	15.12.16	18:34	AT DISDC CKT. TRIPPED ON 86.
55	16.12.16	01:45	MASJID MOTH 220/33kV 100MVA Tx-I	16.12.16	09:25	I/C TRIPPED ON TURBO ALARM.
56	17.12.16	07:50	BAMNAULI 400/220kV 500MVA ICT-II	17.12.16	17:25	ICT TRIPPED ON POLE DISCREPANCY.
57	17.12.16	10:56	400kV Ballabgarh-Bamnauli Ckt-I	19.12.16	21:45	AT BAMNAULI CKT. TRIPPED ON DIST PROT. ZONE-I, RYB PHASE.
58	20.12.16	03:15	ROHINI-II 220/66kV 160MVA Tx-I	20.12.16	06:55	TR. TRIPPED ON 86, 86 A&B, GEN TRIP.
59	21.12.16	10:43	220kV DIAL- MEHRAULI CKT-I	21.12.16	10:50	AT DIAL CKT. TRIPPED ON LINE DIFFERENTIAL, 86. AT MEHRAULI CKT. DID NOT TRIP.
60	21.12.16	10:44	BAWANA 400/220kV 315MVA ICT-III	21.12.16	12:18	ICT MADE OFF MANUALLY DUE TO FIRE OBSERVED BY GRID STAFF.
61	21.12.16	10:55	BAWANA 400/220kV 315MVA ICT-V	21.12.16	11:49	ICT TRIPPED ON OVERLOADING.

SL NO	OCCURRENCE OF BREAK-DOWN		DETAILS OF THE BREAKDOWN	TIME OF RESTORATION		REMARKS
	DATE	TIME		DATE	TIME	
62	23.12.16	07:42	220kV BAWANA - KANJHAWALA CKT - 1	23.12.16	10:55	AT BAWANA CKT. TRIPPED ON DIST PROT, ZONE-I, R PHASE, 86.
63	23.12.16	09:28	DSIIDC Bawana 220/66kV 100MVA Tx-III	23.12.16	09:50	TR. TRIPPED ON O/C, E/F.
64	23.12.16	09:28	DSIIDC Bawana 220/66kV 100MVA Tx-II	23.12.16	10:40	TR. TRIPPED ON O/C, E/F. ALONGWITH 66KV I/C-II.
65	27.12.16	08:21	220kV BAWANA - KANJHAWALA CKT - 1	27.12.16	08:35	AT BAWANA CKT TRIPPED ON DIRECTIONAL O/C,D/P,Z-1,R-PH, DIST-3.685KM.
66	27.12.16	16:45	220KV SHALIMARBAGH-WAZIRPUR CKT-II	27.12.16	17:08	CKT TRIPPED DUE TO OPERATION OF BUS BAR PROTECTION AT WAZIRPUR S/STN.
67	27.12.16	16:45	220KV PEERAGARHI-WAZIRPUR CKT-II	27.12.16	17:08	CKT TRIPPED DUE TO OPERATION OF BUS BAR PROTECTION AT WAZIRPUR S/STN.
68	27.12.16	16:45	WAZIRPUR 220/33kV 100MVA Tx-II	27.12.16	17:08	TX TRIPPED DUE TO OPERATION OF BUS BAR PROTECTION.
69	28.12.16	03:29	KANJHAWALA 220/66kV 100MVA Tx-II	28.12.16	04:00	TX TRIPPED ON LOW AIR PRESSURE.
70	28.12.16	04:02	DIAL 220/66kV 160MVA Tx-II	28.12.16	05:09	TX TRIPPED ON OVER FLUX,86 A&B.
71	29.12.16	05:12	KANJHAWALA 220/66kV 100MVA Tx-II	29.12.16	05:30	TX TRIPPED WITHOUT INDICATION.
72	29.12.16	07:36	KANJHAWALA 220/66kV 100MVA Tx-II	29.12.16	07:51	TX TRIPPED WITHOUT INDICATION.
73	30.12.16	00:34	PARKSTREET 220/66kV 100MVA Tx-I	30.12.16	08:15	66KV I/C-I TRIPPED ON E/F.
74	30.12.16	00:42	PARKSTREET 220/66kV 100MVA Tx-II	30.12.16	00:57	TR. TRIPPED ON E/F.
75	30.12.16	01:02	PARKSTREET 220/66kV 100MVA Tx-II	30.12.16	01:05	I/C-II TRIPPED ON E/F.
76	30.12.16	01:05	DSIIDC Bawana 220/66kV 100MVA Tx-III	30.12.16	01:45	TR. TRIPPED ON O/C, 86C.
77	30.12.16	01:05	DSIIDC Bawana 220/66kV 100MVA Tx-II	30.12.16	01:57	TR. TRIPPED ON O/C, 86C.
78	30.12.16	01:06	220kV DSIIDC BAWANA-NARELA CKT-II	30.12.16	18:18	AT NARELA CKT. TRIPPED ON DIRECTIONAL E/F, O/C, DIFFERENTIAL. AT DSIDC BAWANA CKT. DID NOT TRIP.
79	30.12.16	03:49	DIAL 220/66kV 160MVA Tx-II	30.12.16	06:29	TR. TRIPPED ON OVER FLUX, 86A, 86B.
80	30.12.16	08:27	PARKSTREET 220/66kV 100MVA Tx-II	30.12.16	09:44	66KV I/C-II TRIPPED ON E/F.
81	30.12.16	17:00	220kV Harsh Vihar - Preet Vihar Ckt-II	30.12.16	17:17	CKT. DID NOT TRIPPED AT PREET VIHAR.
82	30.12.16	17:00	220kV Harsh Vihar - Preet Vihar Ckt-I	30.12.16	17:20	CKT. DID NOT TRIPPED AT PREET VIHAR.
83	31.12.16	03:47	ROHINI 220/66kV 100MVA Tx-II	31.12.16	15:39	tr. tripped on 30e, 30g, 86.
84	31.12.16	06:35	SARITA VIHAR 220/66kV 100MVA Tx-II	31.12.16	14:40	TR. TRIPPED ON DIFFERENTIAL, B PHASE, 87T.
85	31.12.16	08:09	220 KV PATPARGANJ - I.P. CKT-I	31.12.16	08:50	AT PATPARGANJ CKT. TRIPPED ON E/F, ACTIVE GROUP-I, DIST PROT, ZONE-I, 86, 186. AT I.P. CKT. TRIPPED ON DIST PROT, ZONE-I, 86, 186.

SL NO	OCCURRENCE OF BREAK-DOWN		DETAILS OF THE BREAKDOWN	TIME OF RESTORATION		REMARKS
	DATE	TIME		DATE	TIME	
86	31.12.16	08:37	220 KV PATPARGANJ - I.P. CKT-II	31.12.16	08:50	AT PATPARGANJ CKT. TRIPPED ON TRIP PHASE ABC, DIST PROT, ZONE-II, ACTIVE GROUP -1, 186. AT I.P. CK. TRIPPED ON 86, 186.
87	31.12.16	08:43	PRAGATI 220/66kV 160MVA Tx-II	31.12.16	08:54	TR. TRIPPED ON REF, 86, WHILE CLOSING BUS COUPLER.
88	31.12.16	09:07	220kV DSIIDC BAWANA-NARELA CKT-II	31.12.16	12:25	AT NARELA CKT. TRIPPED ON 64DS WHILE ENERGIZING THE CKT.
89	31.12.16	09:10	DSIIDC Bawana 220/66kV 100MVA Tx-II	31.12.16	09:30	TR. TRIPPED ON O/C, E/F.
90	31.12.16	09:10	DSIIDC Bawana 220/66kV 100MVA Tx-III	31.12.16	09:28	TR. TRIPPED ON O/C, E/F.

20 DETAILS OF UNDER FREQUENCY RELAY OPERATIONS IN DELHI POWER SYSTEM DURING THE MONTH OF DECEMBER 2016

DATE	S. N.	TIME		Name of Grid	NAME OF AFFECTED FEEDERS	MODE	LOAD RELIEF IN MW
		OUT	IN				
				NIL			